

FINAL HYDRAULIC AND HYDROLOGIC MODELING REPORT

(Volume III of III)

LANGDALE PROJECT (FERC No. 2341)
AND
RIVERVIEW PROJECT (FERC No. 2350)



Prepared for:

Georgia Power Company

Prepared by:

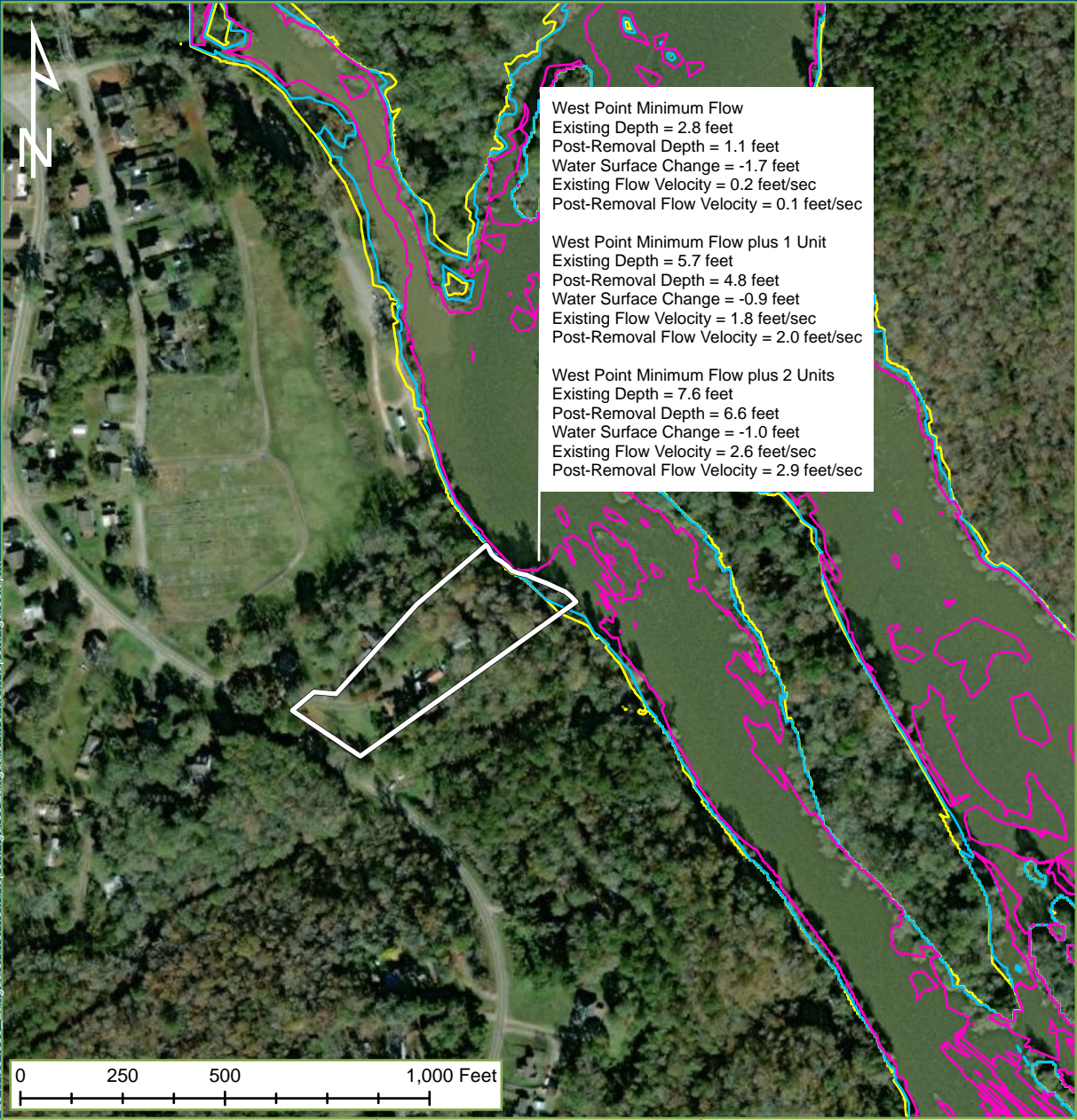
Kleinschmidt Associates

August 2022

Kleinschmidt

APPENDIX D (Continued)

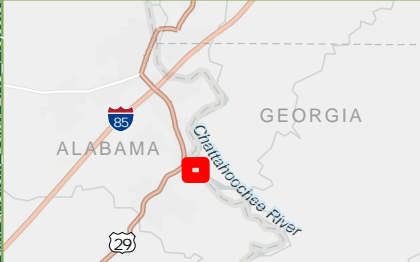
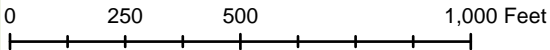
PROPERTY OWNERS PARCEL MAPS



West Point Minimum Flow
 Existing Depth = 2.8 feet
 Post-Removal Depth = 1.1 feet
 Water Surface Change = -1.7 feet
 Existing Flow Velocity = 0.2 feet/sec
 Post-Removal Flow Velocity = 0.1 feet/sec

West Point Minimum Flow plus 1 Unit
 Existing Depth = 5.7 feet
 Post-Removal Depth = 4.8 feet
 Water Surface Change = -0.9 feet
 Existing Flow Velocity = 1.8 feet/sec
 Post-Removal Flow Velocity = 2.0 feet/sec

West Point Minimum Flow plus 2 Units
 Existing Depth = 7.6 feet
 Post-Removal Depth = 6.6 feet
 Water Surface Change = -1.0 feet
 Existing Flow Velocity = 2.6 feet/sec
 Post-Removal Flow Velocity = 2.9 feet/sec



- Legend**
- Property Boundary
 - Base Flow Inundation Boundary
 - Base Flow +1 Inundation Boundary
 - Base Flow +2 Inundation Boundary

Georgia Power
 Langdale, Georgia

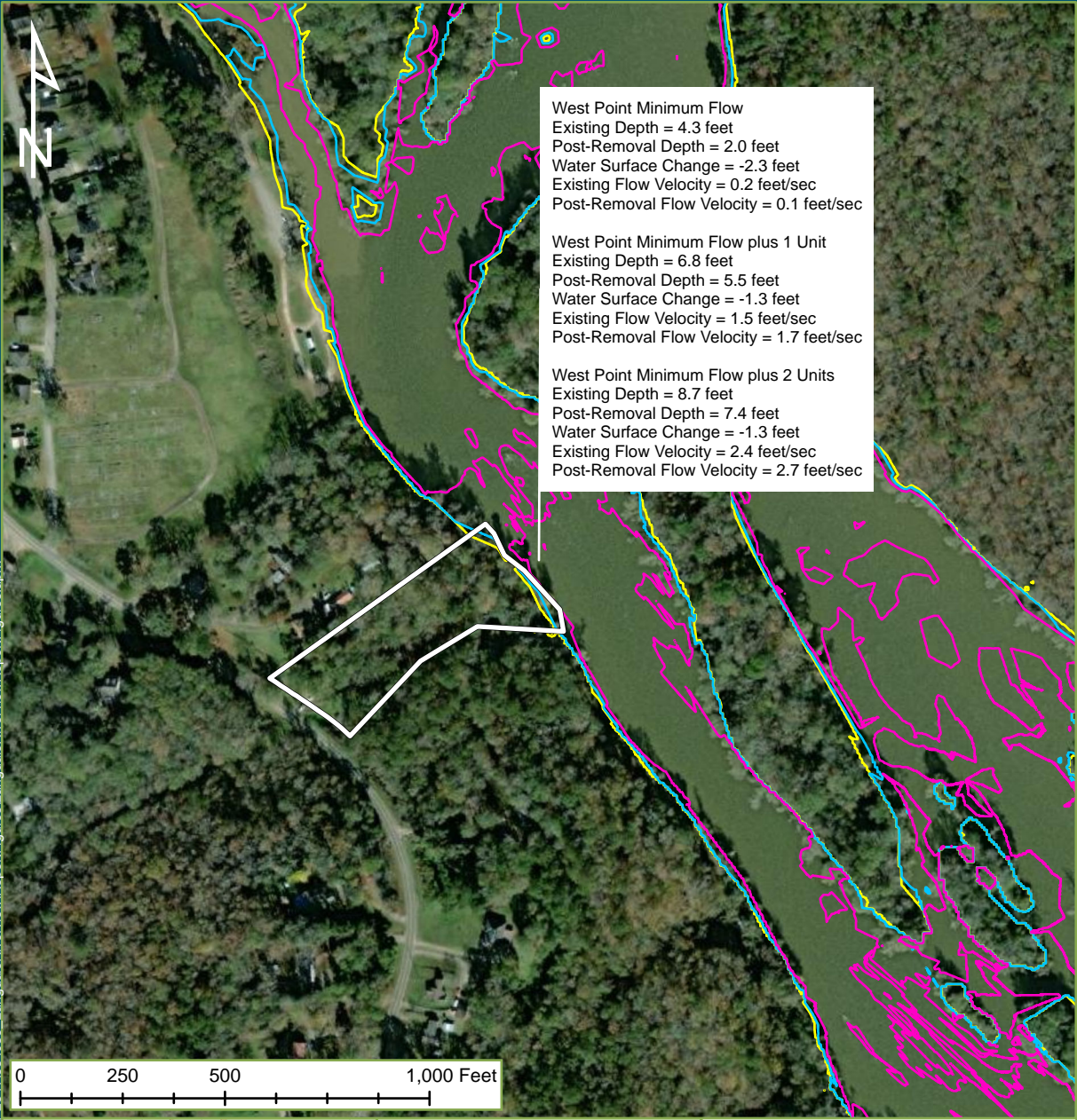
Drawn By: ADY	Date Drawn: 05-20-2022	Checked By: KPN	Date Checked: 05-20-2022
------------------	---------------------------	--------------------	-----------------------------

Kleinschmidt
 141 Main St., PO Box 650
 Pittsfield, Maine 04967
 Telephone: (207) 487-3328
 Fax: (207) 487-3124
www.KleinschmidtGroup.com

This map/data was created for informational, planning, reference and guidance purposes only. Kleinschmidt makes no warranty, expressed or implied related to the accuracy or content of these materials.

Path: Q:\Client_Data\TERRC_Projects\P2341534039_LangdaleRiverView\ReportFigures\LangdaleRiverViewReportFigures.aprx

Date Printed: 5/20/2022

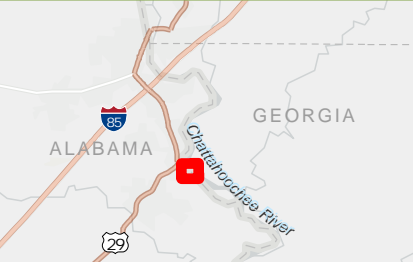


West Point Minimum Flow
 Existing Depth = 4.3 feet
 Post-Removal Depth = 2.0 feet
 Water Surface Change = -2.3 feet
 Existing Flow Velocity = 0.2 feet/sec
 Post-Removal Flow Velocity = 0.1 feet/sec

West Point Minimum Flow plus 1 Unit
 Existing Depth = 6.8 feet
 Post-Removal Depth = 5.5 feet
 Water Surface Change = -1.3 feet
 Existing Flow Velocity = 1.5 feet/sec
 Post-Removal Flow Velocity = 1.7 feet/sec

West Point Minimum Flow plus 2 Units
 Existing Depth = 8.7 feet
 Post-Removal Depth = 7.4 feet
 Water Surface Change = -1.3 feet
 Existing Flow Velocity = 2.4 feet/sec
 Post-Removal Flow Velocity = 2.7 feet/sec

Path: O:\Client_Data\TERRC_P\Projects\P2341634039_LangdaleRiverView\ReportFigures\LangdaleRiverViewReportFigures.aprx



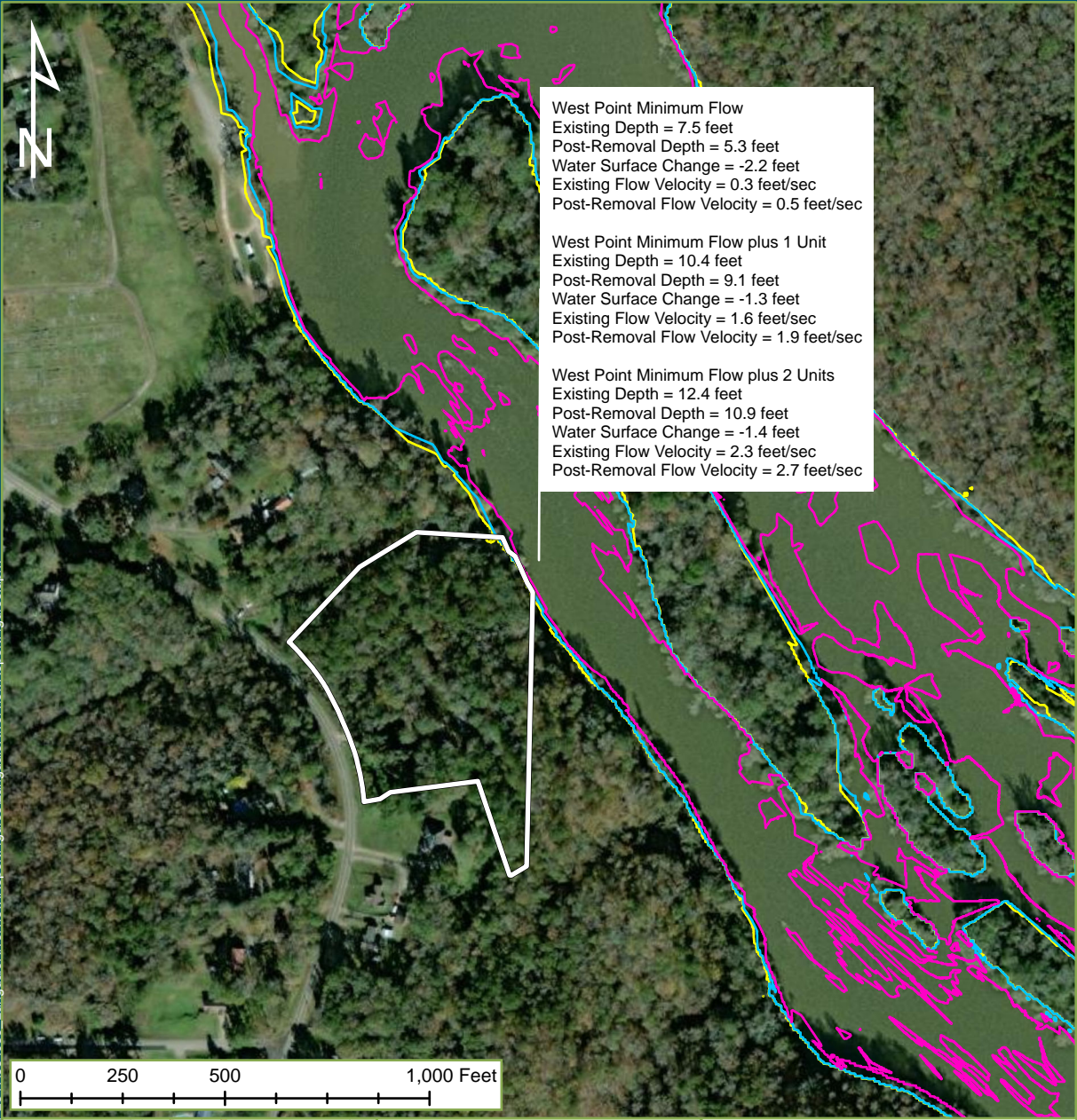
- Legend**
- Property Boundary
 - Base Flow Inundation Boundary
 - Base Flow +1 Inundation Boundary
 - Base Flow +2 Inundation Boundary

Georgia Power
 Langdale, Georgia

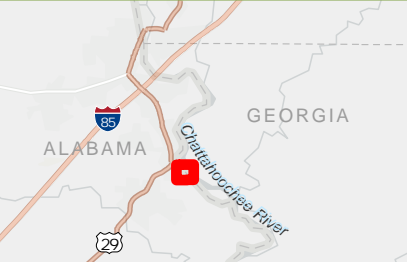
Drawn By: ADY	Date Drawn: 05-20-2022	Checked By: KPN	Date Checked: 05-20-2022
------------------	---------------------------	--------------------	-----------------------------

Kleinschmidt
 141 Main St., PO Box 650
 Pittsfield, Maine 04967
 Telephone: (207) 487-3328
 Fax: (207) 487-3124
www.KleinschmidtGroup.com

This map/data was created for informational, planning, reference and guidance purposes only. Kleinschmidt makes no warranty, expressed or implied related to the accuracy or content of these materials.



Path: Q:\Client_Data\TERRC_P\Projects\P2341634039_LangdaleRiverView\ReportFigures\LangdaleRiverViewReportFigures.aprx



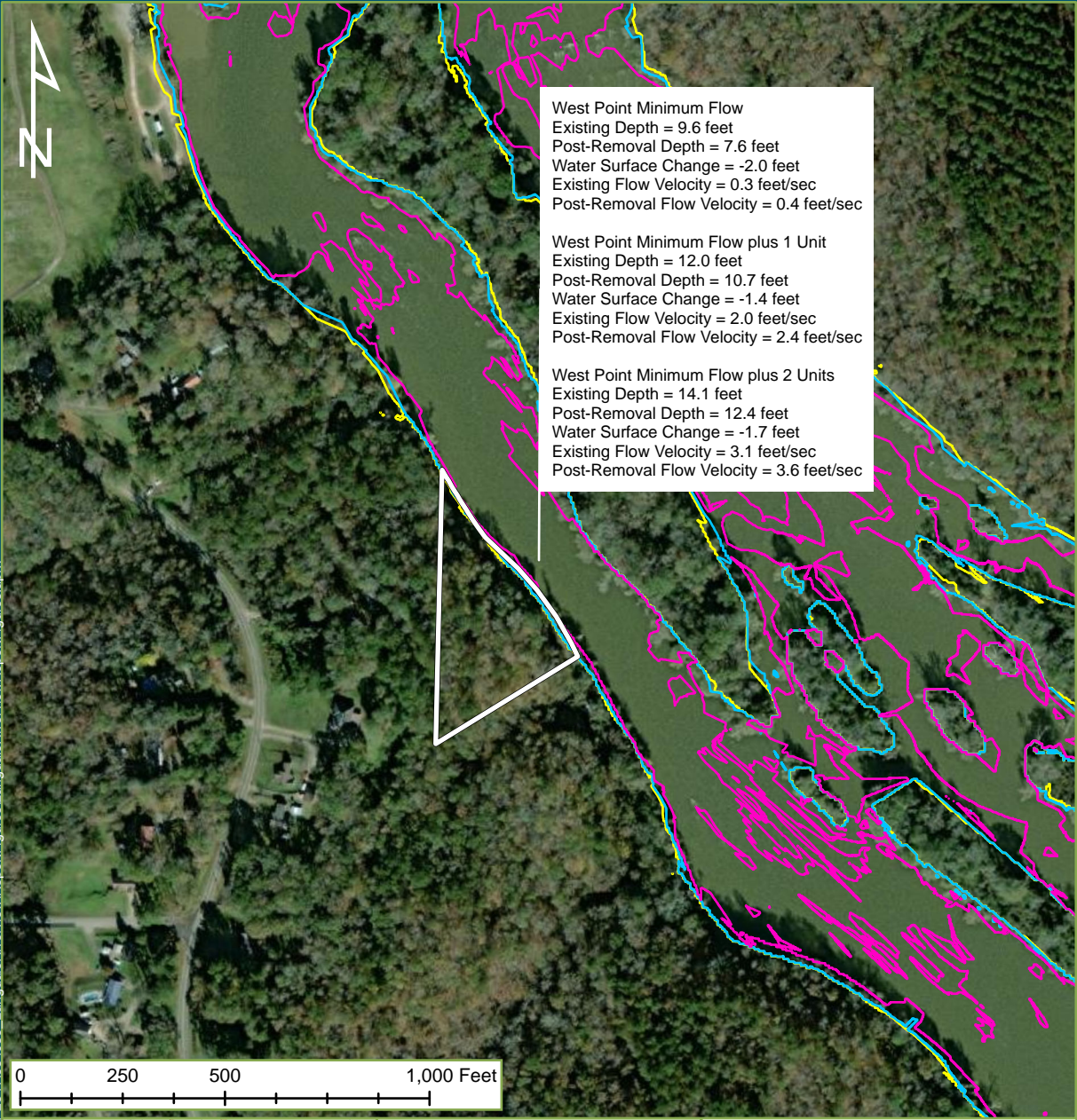
- Legend**
- Property Boundary
 - Base Flow Inundation Boundary
 - Base Flow +1 Inundation Boundary
 - Base Flow +2 Inundation Boundary

Georgia Power
Langdale, Georgia

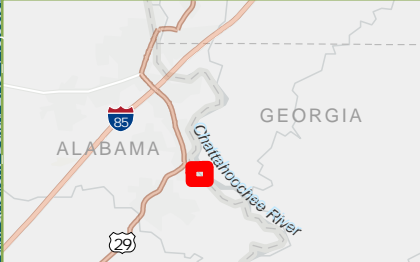
Drawn By: ADY	Date Drawn: 05-20-2022	Checked By: KPN	Date Checked: 05-20-2022
------------------	---------------------------	--------------------	-----------------------------

Kleinschmidt
 141 Main St., PO Box 650
 Pittsfield, Maine 04967
 Telephone: (207) 487-3328
 Fax: (207) 487-3124
 www.KleinschmidtGroup.com

This map/data was created for informational, planning, reference and guidance purposes only. Kleinschmidt makes no warranty, expressed or implied related to the accuracy or content of these materials.



Path: Q:\Client_Data\TERRC_P\Projects\P2341634039_LangdaleRiverView\ReportFigures\LangdaleRiverViewReportFigures.aprx



Legend

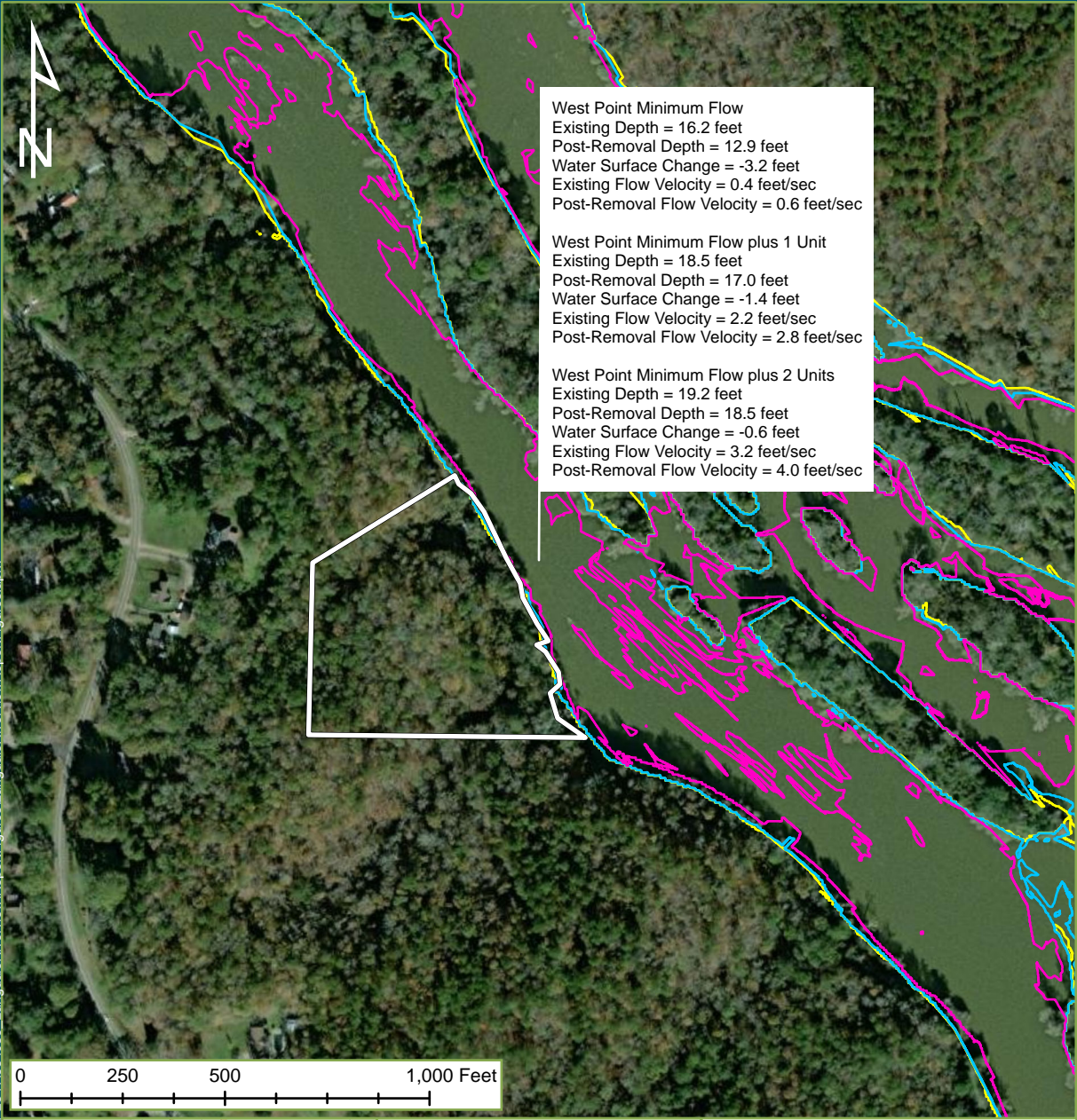
- Property Boundary
- Base Flow Inundation Boundary
- Base Flow +1 Inundation Boundary
- Base Flow +2 Inundation Boundary

Georgia Power
 Langdale, Georgia

Drawn By: ADY	Date Drawn: 05-20-2022	Checked By: KPN	Date Checked: 05-20-2022
------------------	---------------------------	--------------------	-----------------------------

Kleinschmidt
 141 Main St., PO Box 650
 Pittsfield, Maine 04967
 Telephone: (207) 487-3328
 Fax: (207) 487-3124
www.KleinschmidtGroup.com

This map/data was created for informational, planning, reference and guidance purposes only. Kleinschmidt makes no warranty, expressed or implied related to the accuracy or content of these materials.

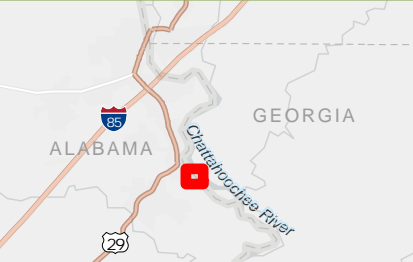


West Point Minimum Flow
 Existing Depth = 16.2 feet
 Post-Removal Depth = 12.9 feet
 Water Surface Change = -3.2 feet
 Existing Flow Velocity = 0.4 feet/sec
 Post-Removal Flow Velocity = 0.6 feet/sec

West Point Minimum Flow plus 1 Unit
 Existing Depth = 18.5 feet
 Post-Removal Depth = 17.0 feet
 Water Surface Change = -1.4 feet
 Existing Flow Velocity = 2.2 feet/sec
 Post-Removal Flow Velocity = 2.8 feet/sec

West Point Minimum Flow plus 2 Units
 Existing Depth = 19.2 feet
 Post-Removal Depth = 18.5 feet
 Water Surface Change = -0.6 feet
 Existing Flow Velocity = 3.2 feet/sec
 Post-Removal Flow Velocity = 4.0 feet/sec

Path: Q:\Client_Data\TERRC_P\Projects\P2341634039_LangdaleRiverView\ReportFigures\LangdaleRiverViewReportFigures.aprx



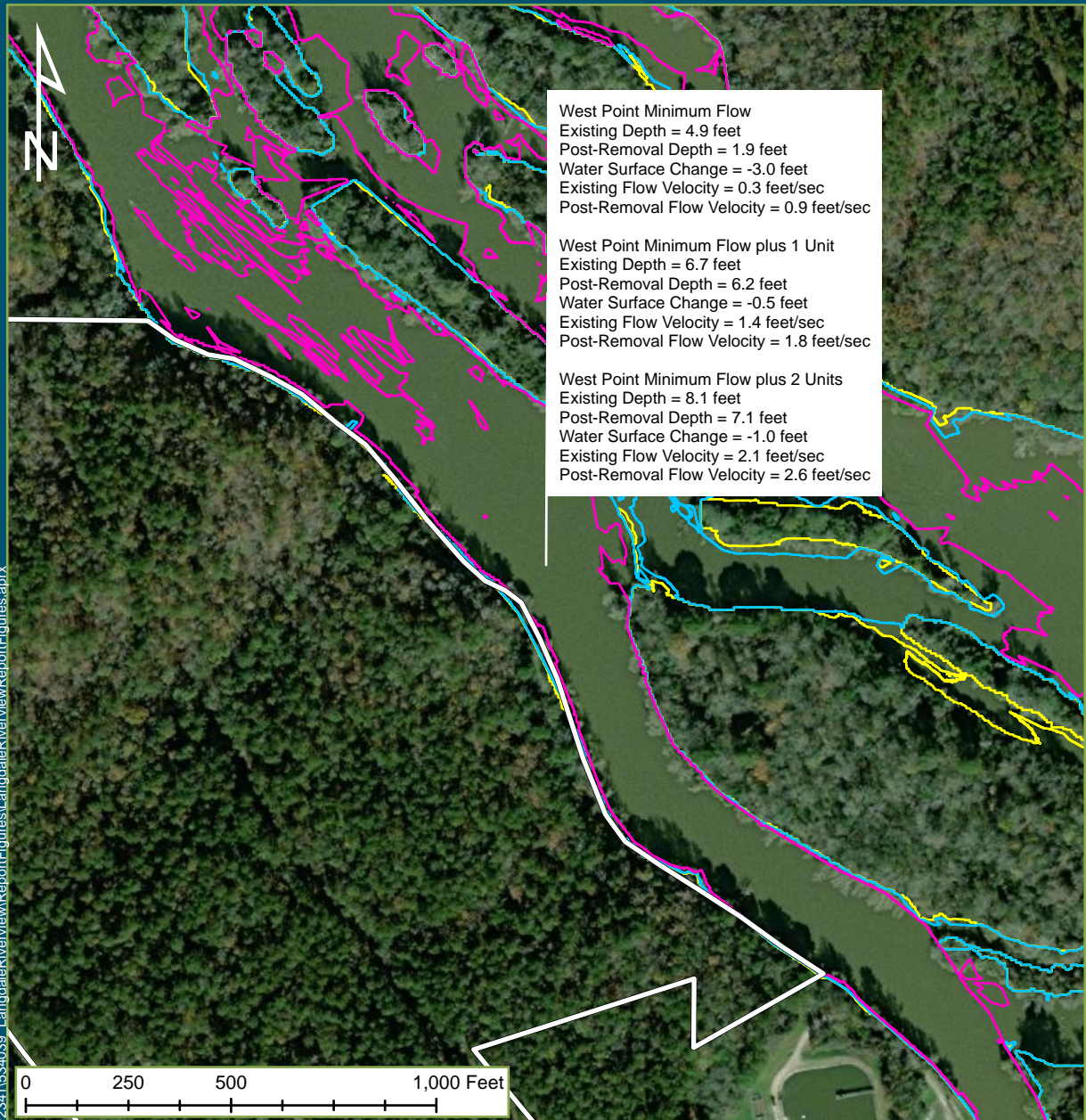
- Legend**
- Property Boundary
 - Base Flow Inundation Boundary
 - Base Flow +1 Inundation Boundary
 - Base Flow +2 Inundation Boundary

Georgia Power
 Langdale, Georgia

Drawn By: ADY	Date Drawn: 05-20-2022	Checked By: KPN	Date Checked: 05-20-2022
------------------	---------------------------	--------------------	-----------------------------

Kleinschmidt
 141 Main St., PO Box 650
 Pittsfield, Maine 04967
 Telephone: (207) 487-3328
 Fax: (207) 487-3124
www.KleinschmidtGroup.com

This map/data was created for informational, planning, reference and guidance purposes only. Kleinschmidt makes no warranty, expressed or implied related to the accuracy or content of these materials.

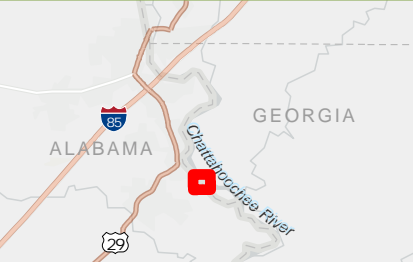


West Point Minimum Flow
 Existing Depth = 4.9 feet
 Post-Removal Depth = 1.9 feet
 Water Surface Change = -3.0 feet
 Existing Flow Velocity = 0.3 feet/sec
 Post-Removal Flow Velocity = 0.9 feet/sec

West Point Minimum Flow plus 1 Unit
 Existing Depth = 6.7 feet
 Post-Removal Depth = 6.2 feet
 Water Surface Change = -0.5 feet
 Existing Flow Velocity = 1.4 feet/sec
 Post-Removal Flow Velocity = 1.8 feet/sec

West Point Minimum Flow plus 2 Units
 Existing Depth = 8.1 feet
 Post-Removal Depth = 7.1 feet
 Water Surface Change = -1.0 feet
 Existing Flow Velocity = 2.1 feet/sec
 Post-Removal Flow Velocity = 2.6 feet/sec

Path: Q:\Client_Data\TERC_Projects\P2341634039_LangdaleRiverView\ReportFigures\LangdaleRiverViewReportFigures.aprx



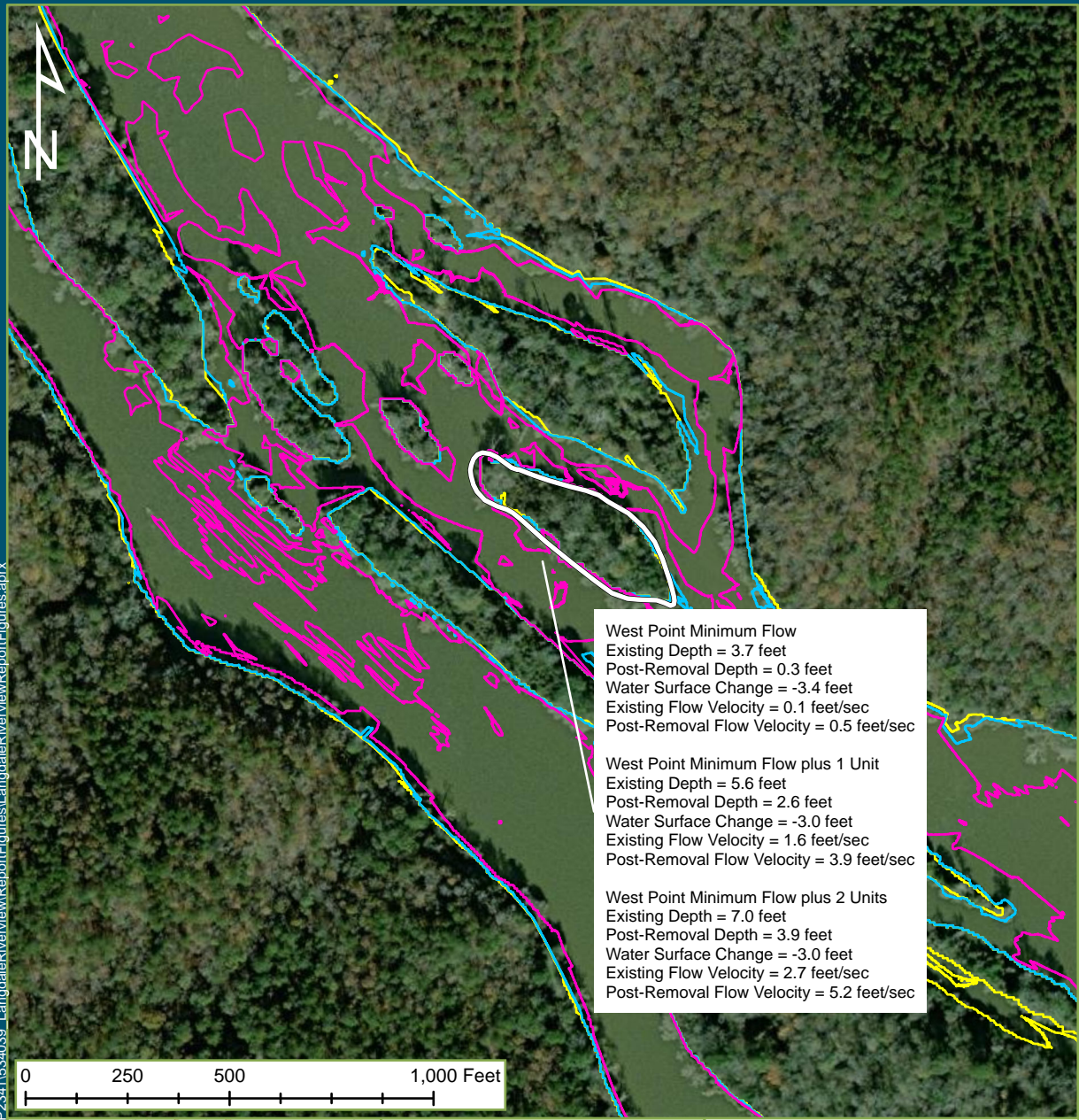
- Legend**
- Property Boundary
 - Base Flow Inundation Boundary
 - Base Flow +1 Inundation Boundary
 - Base Flow +2 Inundation Boundary

Georgia Power
 Langdale, Georgia

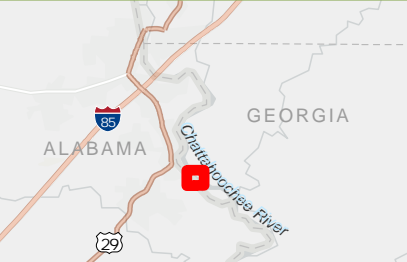
Drawn By: ADY	Date Drawn: 05-20-2022	Checked By: KPN	Date Checked: 05-20-2022
------------------	---------------------------	--------------------	-----------------------------

Kleinschmidt
 141 Main St., PO Box 650
 Pittsfield, Maine 04967
 Telephone: (207) 487-3328
 Fax: (207) 487-3124
www.KleinschmidtGroup.com

This map/data was created for informational, planning, reference and guidance purposes only. Kleinschmidt makes no warranty, expressed or implied related to the accuracy or content of these materials.



<p>West Point Minimum Flow Existing Depth = 3.7 feet Post-Removal Depth = 0.3 feet Water Surface Change = -3.4 feet Existing Flow Velocity = 0.1 feet/sec Post-Removal Flow Velocity = 0.5 feet/sec</p> <p>West Point Minimum Flow plus 1 Unit Existing Depth = 5.6 feet Post-Removal Depth = 2.6 feet Water Surface Change = -3.0 feet Existing Flow Velocity = 1.6 feet/sec Post-Removal Flow Velocity = 3.9 feet/sec</p> <p>West Point Minimum Flow plus 2 Units Existing Depth = 7.0 feet Post-Removal Depth = 3.9 feet Water Surface Change = -3.0 feet Existing Flow Velocity = 2.7 feet/sec Post-Removal Flow Velocity = 5.2 feet/sec</p>
--



Legend

- Property Boundary
- Base Flow Inundation Boundary
- Base Flow +1 Inundation Boundary
- Base Flow +2 Inundation Boundary

Georgia Power
Langdale, Georgia

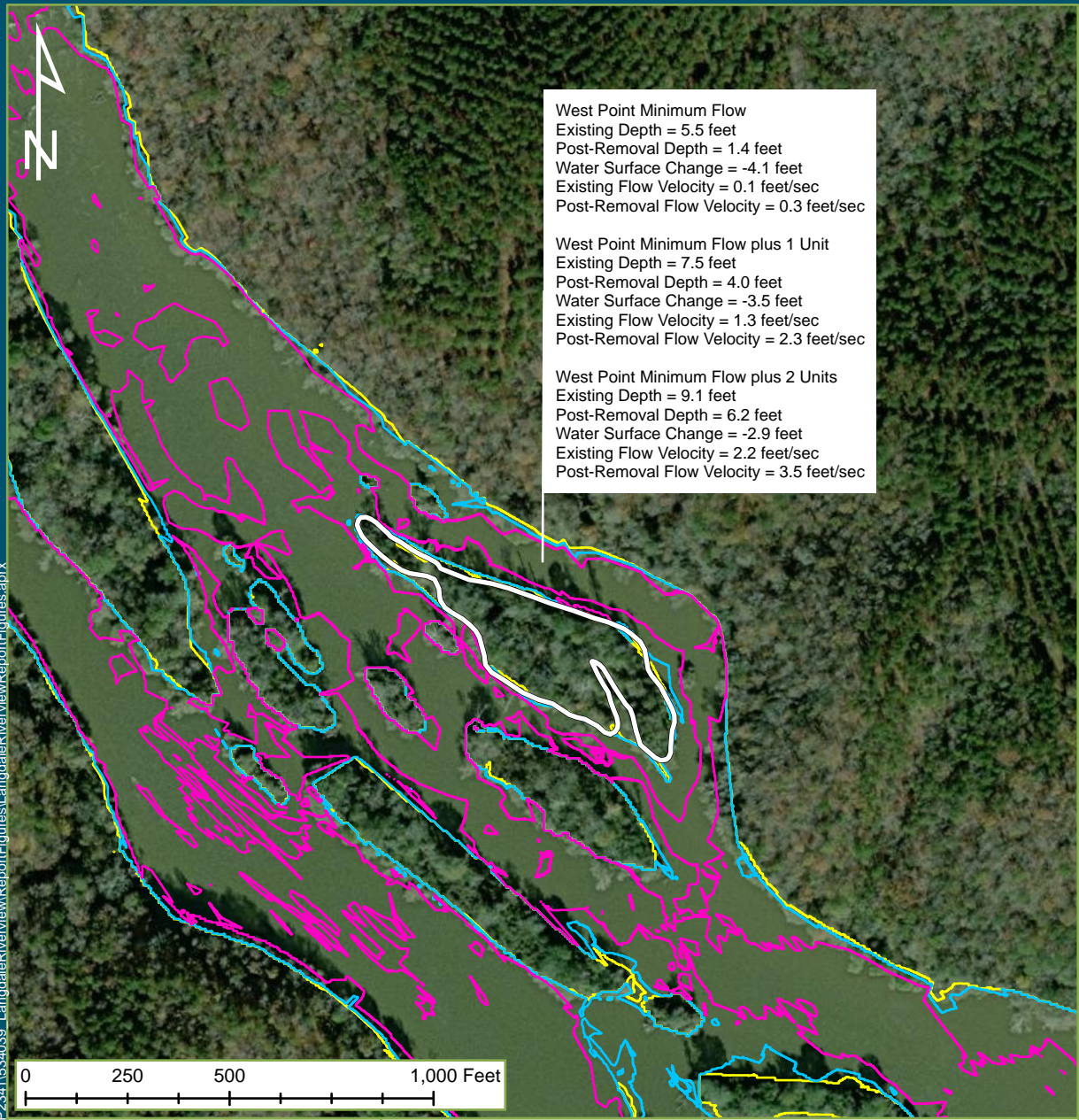
Drawn By: ADY	Date Drawn: 05-20-2022	Checked By: KPN	Date Checked: 05-20-2022
------------------	---------------------------	--------------------	-----------------------------

Kleinschmidt
 141 Main St., PO Box 650
 Pittsfield, Maine 04967
 Telephone: (207) 487-3328
 Fax: (207) 487-3124
 www.KleinschmidtGroup.com

This map/data was created for informational, planning, reference and guidance purposes only. Kleinschmidt makes no warranty, expressed or implied related to the accuracy or content of these materials.

Path: Q:\Client_Data\TERRC_P\Projects\P2341634039_LangdaleRiverView\ReportFigures.aprx

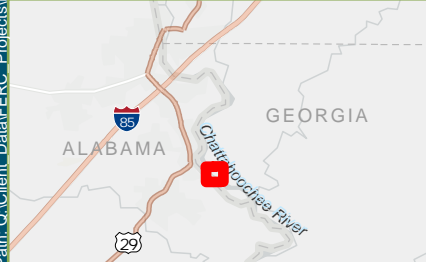
Date Printed: 5/20/2022



West Point Minimum Flow
 Existing Depth = 5.5 feet
 Post-Removal Depth = 1.4 feet
 Water Surface Change = -4.1 feet
 Existing Flow Velocity = 0.1 feet/sec
 Post-Removal Flow Velocity = 0.3 feet/sec

West Point Minimum Flow plus 1 Unit
 Existing Depth = 7.5 feet
 Post-Removal Depth = 4.0 feet
 Water Surface Change = -3.5 feet
 Existing Flow Velocity = 1.3 feet/sec
 Post-Removal Flow Velocity = 2.3 feet/sec

West Point Minimum Flow plus 2 Units
 Existing Depth = 9.1 feet
 Post-Removal Depth = 6.2 feet
 Water Surface Change = -2.9 feet
 Existing Flow Velocity = 2.2 feet/sec
 Post-Removal Flow Velocity = 3.5 feet/sec



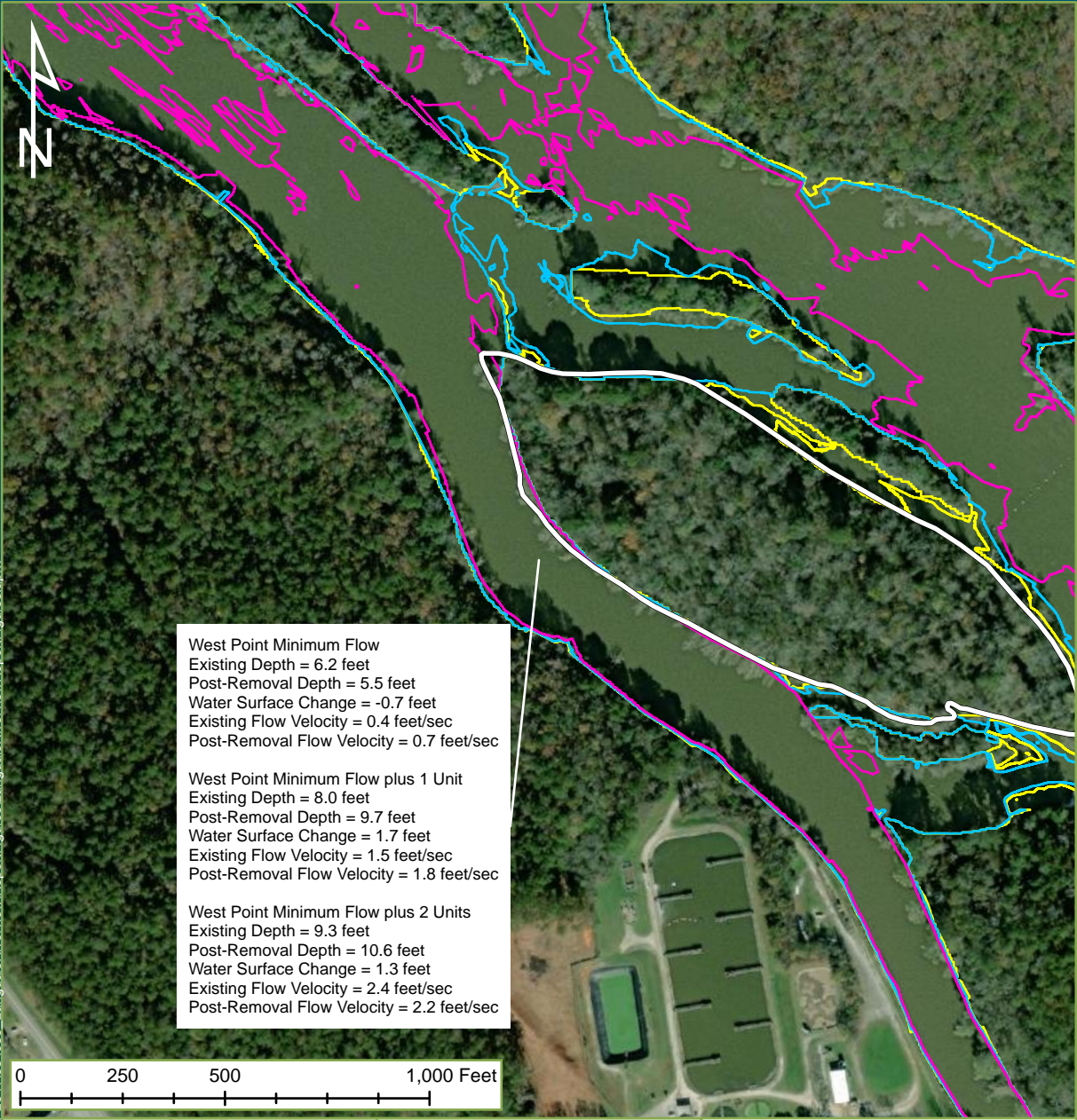
- Legend**
- Property Boundary
 - Base Flow Inundation Boundary
 - Base Flow +1 Inundation Boundary
 - Base Flow +2 Inundation Boundary

Georgia Power
 Langdale, Georgia

Drawn By: ADY	Date Drawn: 05-20-2022	Checked By: KPN	Date Checked: 05-20-2022
------------------	---------------------------	--------------------	-----------------------------

Kleinschmidt
 141 Main St., PO Box 650
 Pittsfield, Maine 04967
 Telephone: (207) 487-3328
 Fax: (207) 487-3124
 www.KleinschmidtGroup.com

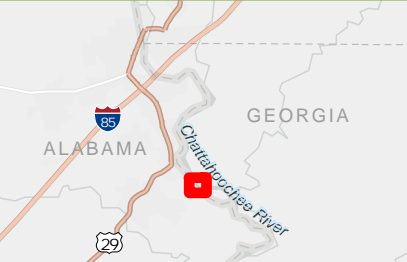
This map/data was created for informational, planning, reference and guidance purposes only. Kleinschmidt makes no warranty, expressed or implied related to the accuracy or content of these materials.



West Point Minimum Flow
 Existing Depth = 6.2 feet
 Post-Removal Depth = 5.5 feet
 Water Surface Change = -0.7 feet
 Existing Flow Velocity = 0.4 feet/sec
 Post-Removal Flow Velocity = 0.7 feet/sec

West Point Minimum Flow plus 1 Unit
 Existing Depth = 8.0 feet
 Post-Removal Depth = 9.7 feet
 Water Surface Change = 1.7 feet
 Existing Flow Velocity = 1.5 feet/sec
 Post-Removal Flow Velocity = 1.8 feet/sec

West Point Minimum Flow plus 2 Units
 Existing Depth = 9.3 feet
 Post-Removal Depth = 10.6 feet
 Water Surface Change = 1.3 feet
 Existing Flow Velocity = 2.4 feet/sec
 Post-Removal Flow Velocity = 2.2 feet/sec



- Legend**
- Property Boundary
 - Base Flow Inundation Boundary
 - Base Flow +1 Inundation Boundary
 - Base Flow +2 Inundation Boundary

Georgia Power
 Langdale, Georgia

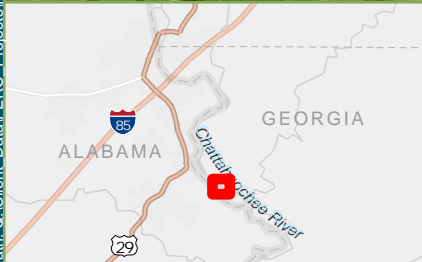
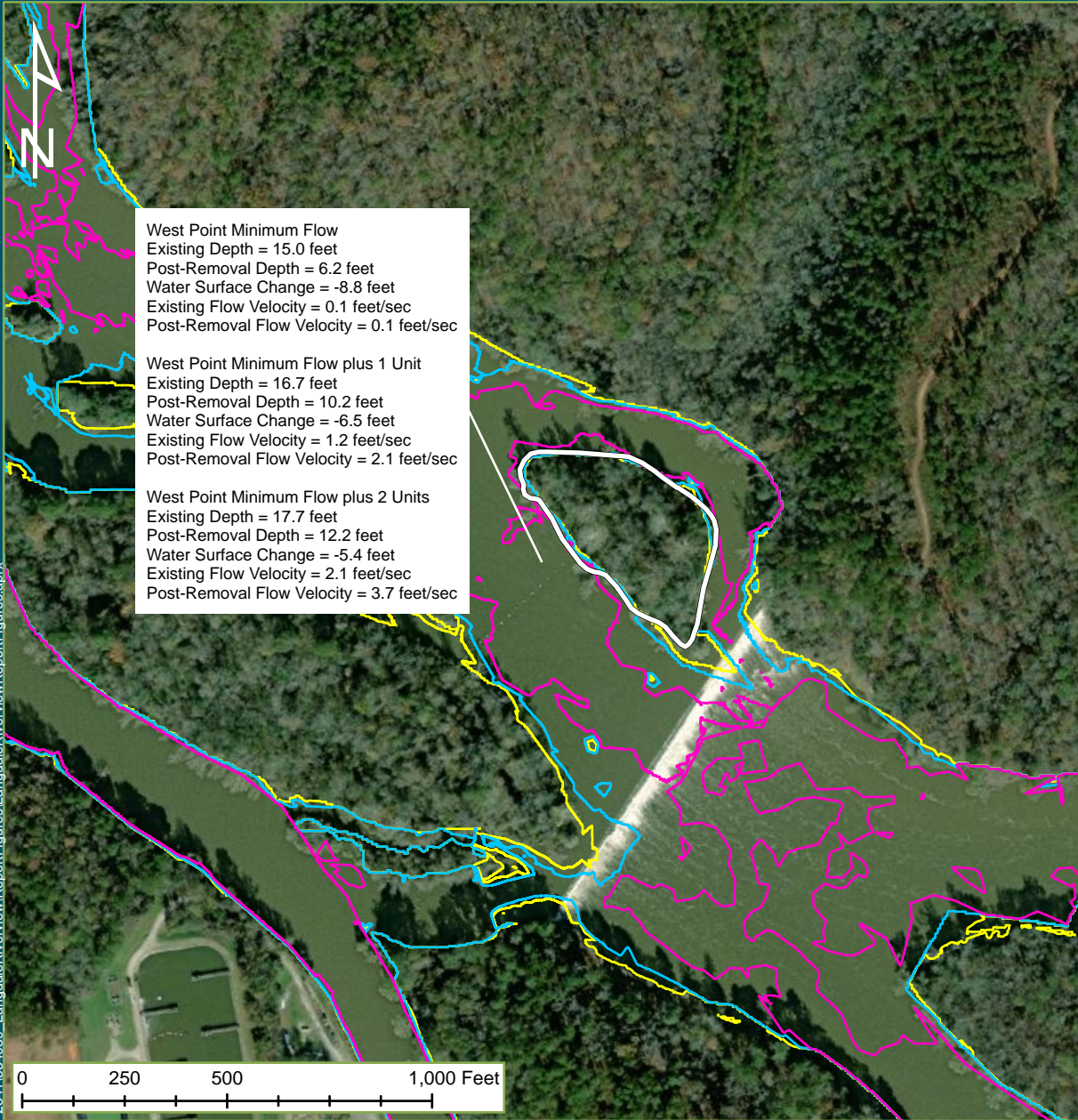
Drawn By: ADY	Date Drawn: 05-20-2022	Checked By: KPN	Date Checked: 05-20-2022
------------------	---------------------------	--------------------	-----------------------------

Kleinschmidt
 141 Main St., PO Box 650
 Pittsfield, Maine 04967
 Telephone: (207) 487-3328
 Fax: (207) 487-3124
www.KleinschmidtGroup.com

This map/data was created for informational, planning, reference and guidance purposes only. Kleinschmidt makes no warranty, expressed or implied related to the accuracy or content of these materials.

Path: Q:\Client_Data\TERRC_Projects\23411634039_LangdaleRiverView\ReportFigures\LangdaleRiverViewReportFigures.aprx

Date Printed: 5/20/2022



Legend

- Property Boundary
- Base Flow Inundation Boundary
- Base Flow +1 Inundation Boundary
- Base Flow +2 Inundation Boundary

Georgia Power
Langdale, Georgia

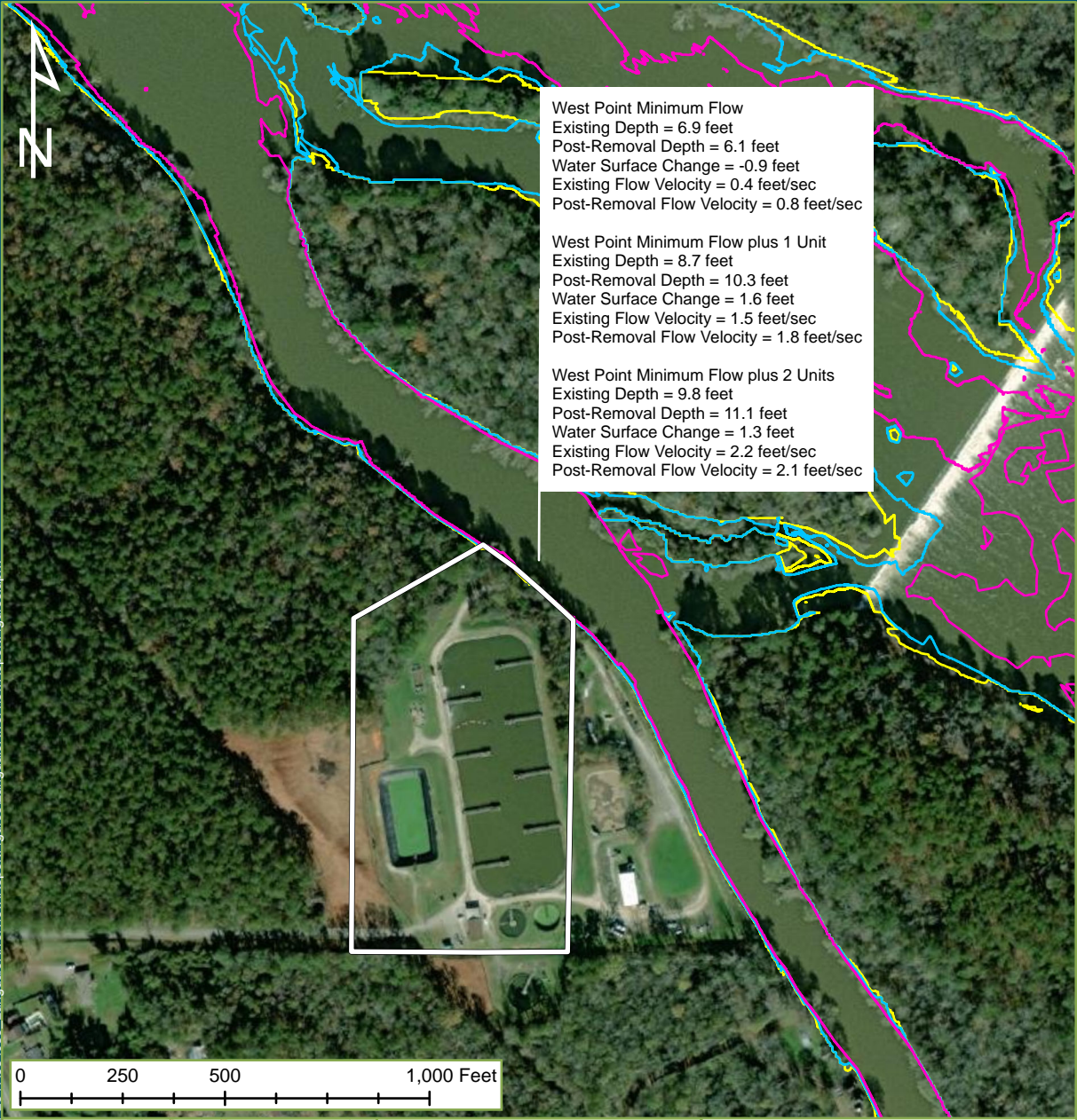
Drawn By: ADY	Date Drawn: 05-20-2022	Checked By: KPN	Date Checked: 05-20-2022
------------------	---------------------------	--------------------	-----------------------------

Kleinschmidt
141 Main St., PO Box 650
Pittsfield, Maine 04967
Telephone: (207) 487-3328
Fax: (207) 487-3124
www.KleinschmidtGroup.com

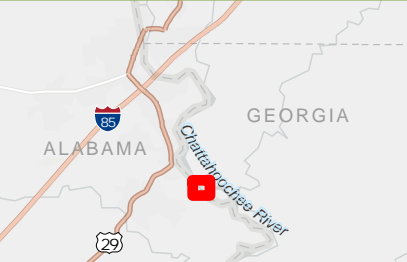
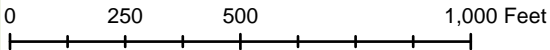
This map/data was created for informational, planning, reference and guidance purposes only. Kleinschmidt makes no warranty, expressed or implied related to the accuracy or content of these materials.

Path: Q:\Client_Data\TERRC_P\Projects\P23416\34039_LangdaleRiverView\ReportFigures.aprx

Date Printed: 5/20/2022



Path: Q:\Client_Data\TERRC_P\Projects\P2341634039_LangdaleRiverView\ReportFigures\LangdaleRiverViewReportFigures.aprx



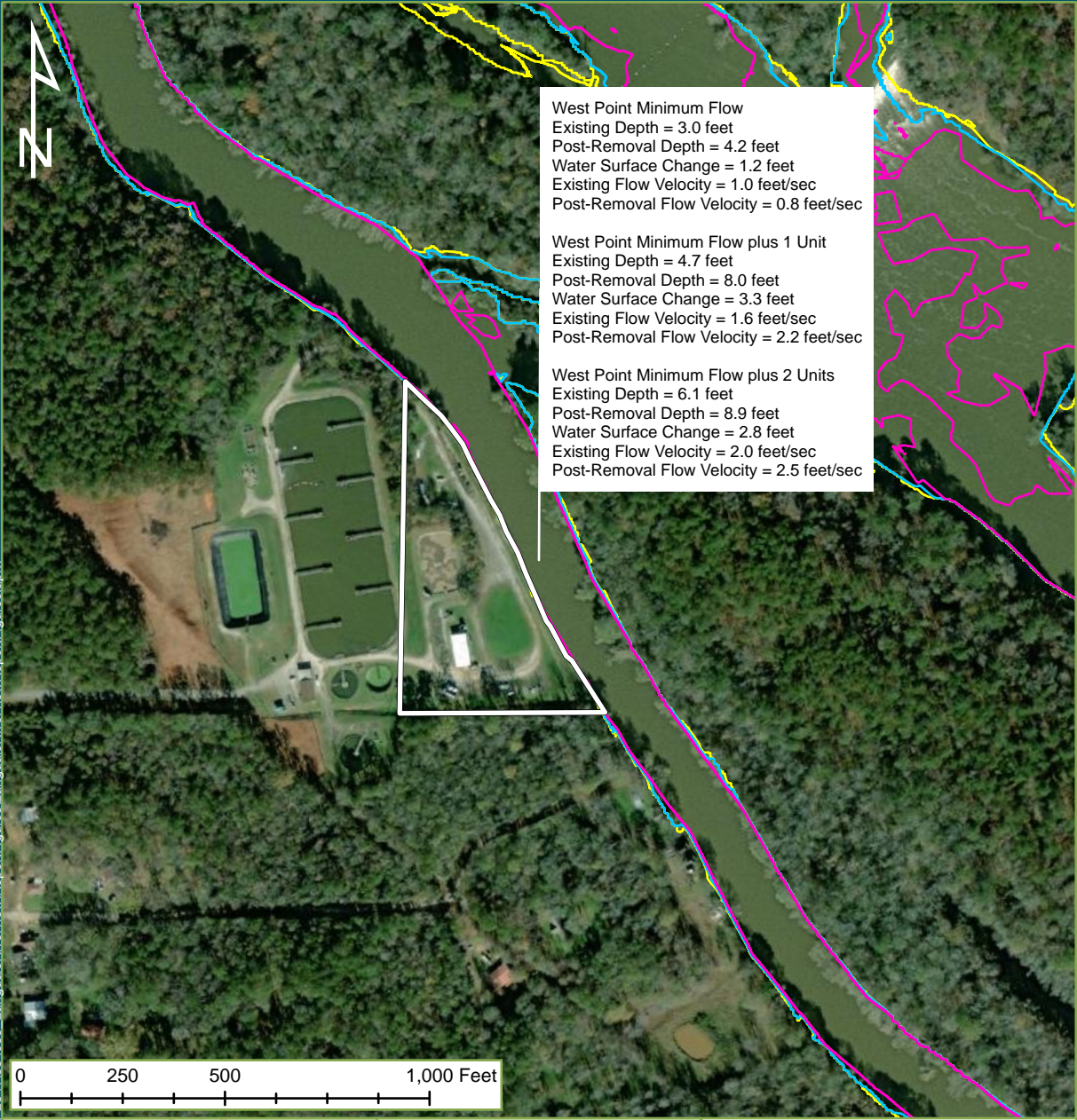
- Legend**
- Property Boundary
 - Base Flow Inundation Boundary
 - Base Flow +1 Inundation Boundary
 - Base Flow +2 Inundation Boundary

Georgia Power
Langdale, Georgia

Drawn By: ADY	Date Drawn: 05-20-2022	Checked By: KPN	Date Checked: 05-20-2022
------------------	---------------------------	--------------------	-----------------------------

Kleinschmidt
 141 Main St., PO Box 650
 Pittsfield, Maine 04967
 Telephone: (207) 487-3328
 Fax: (207) 487-3124
www.KleinschmidtGroup.com

This map/data was created for informational, planning, reference and guidance purposes only. Kleinschmidt makes no warranty, expressed or implied related to the accuracy or content of these materials.

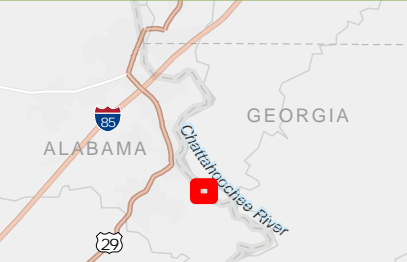
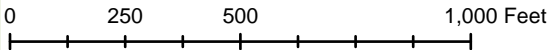


West Point Minimum Flow
 Existing Depth = 3.0 feet
 Post-Removal Depth = 4.2 feet
 Water Surface Change = 1.2 feet
 Existing Flow Velocity = 1.0 feet/sec
 Post-Removal Flow Velocity = 0.8 feet/sec

West Point Minimum Flow plus 1 Unit
 Existing Depth = 4.7 feet
 Post-Removal Depth = 8.0 feet
 Water Surface Change = 3.3 feet
 Existing Flow Velocity = 1.6 feet/sec
 Post-Removal Flow Velocity = 2.2 feet/sec

West Point Minimum Flow plus 2 Units
 Existing Depth = 6.1 feet
 Post-Removal Depth = 8.9 feet
 Water Surface Change = 2.8 feet
 Existing Flow Velocity = 2.0 feet/sec
 Post-Removal Flow Velocity = 2.5 feet/sec

Path: Q:\Client_Data\TERRC_P\Projects\P2341634039_LangdaleRiverView\ReportFigures.aprx



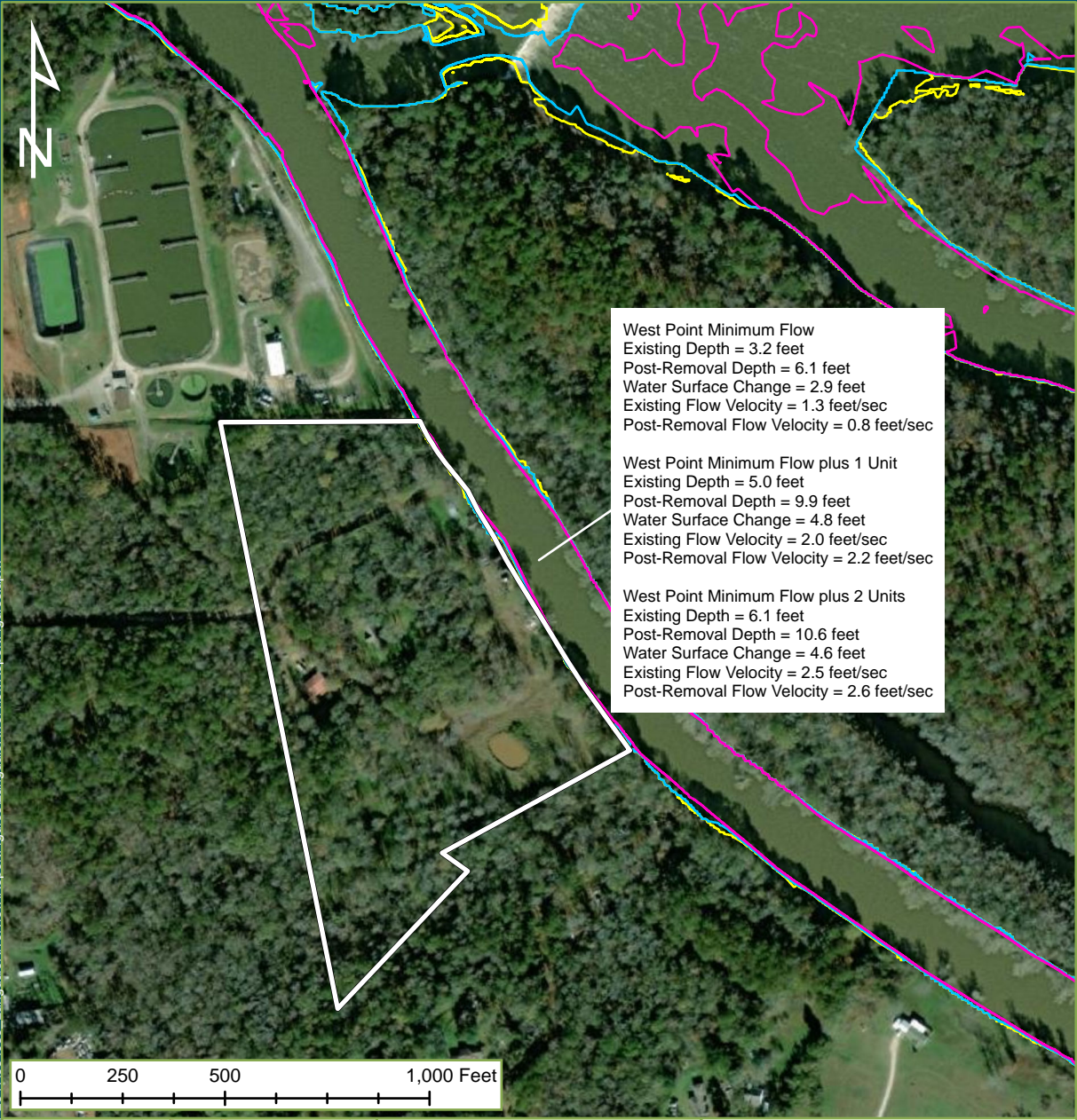
- Legend**
- Property Boundary
 - Base Flow Inundation Boundary
 - Base Flow +1 Inundation Boundary
 - Base Flow +2 Inundation Boundary

Georgia Power
 Langdale, Georgia

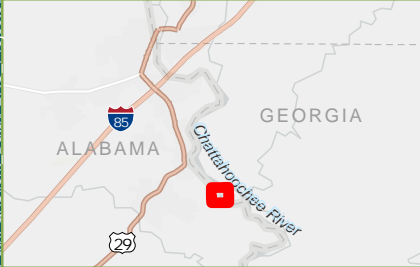
Drawn By: ADY	Date Drawn: 05-20-2022	Checked By: KPN	Date Checked: 05-20-2022
------------------	---------------------------	--------------------	-----------------------------

Kleinschmidt
 141 Main St., PO Box 650
 Pittsfield, Maine 04967
 Telephone: (207) 487-3328
 Fax: (207) 487-3124
www.KleinschmidtGroup.com

This map/data was created for informational, planning, reference and guidance purposes only. Kleinschmidt makes no warranty, expressed or implied related to the accuracy or content of these materials.



Path: Q:\Client_Data\TERRC_P\Projects\P2341534039_LangdaleRiverView\ReportFigures.aprx



Legend

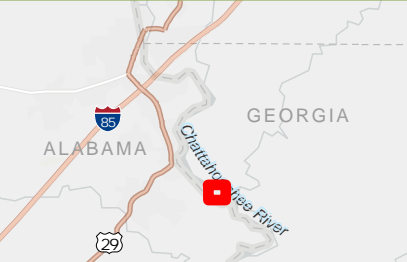
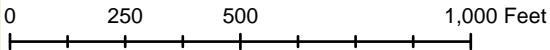
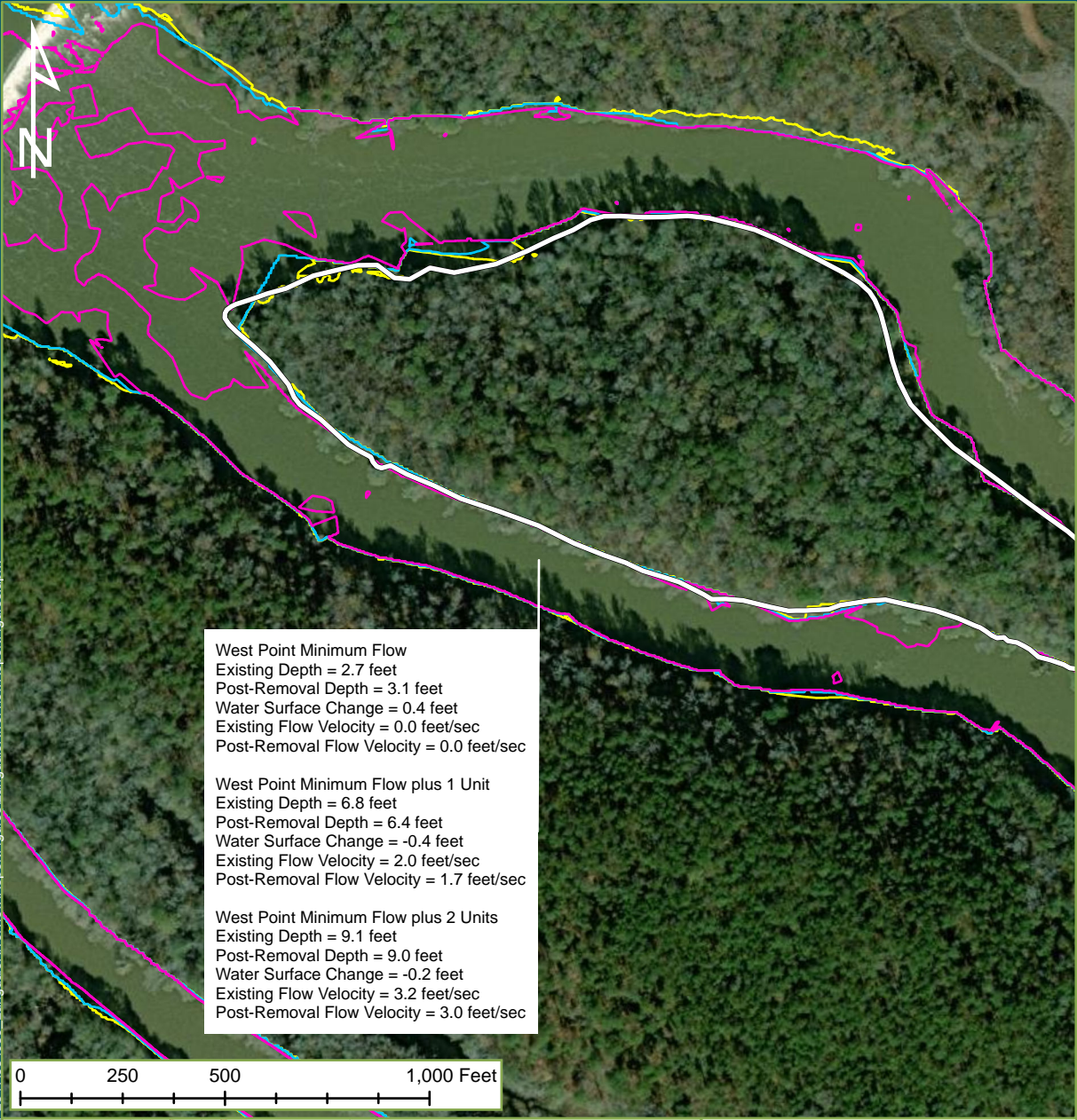
- Property Boundary
- Base Flow Inundation Boundary
- Base Flow +1 Inundation Boundary
- Base Flow +2 Inundation Boundary

Georgia Power
 Langdale, Georgia

Drawn By: ADY	Date Drawn: 05-20-2022	Checked By: KPN	Date Checked: 05-20-2022
------------------	---------------------------	--------------------	-----------------------------

Kleinschmidt
 141 Main St., PO Box 650
 Pittsfield, Maine 04967
 Telephone: (207) 487-3328
 Fax: (207) 487-3124
www.KleinschmidtGroup.com

This map/data was created for informational, planning, reference and guidance purposes only. Kleinschmidt makes no warranty, expressed or implied related to the accuracy or content of these materials.



- Legend**
- Property Boundary
 - Base Flow Inundation Boundary
 - Base Flow +1 Inundation Boundary
 - Base Flow +2 Inundation Boundary

Georgia Power
Langdale, Georgia

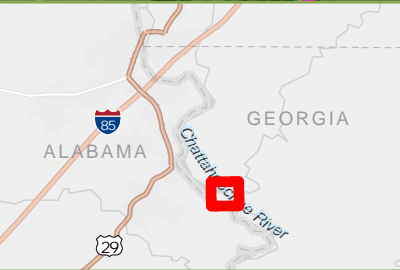
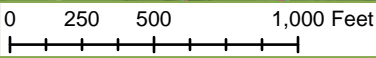
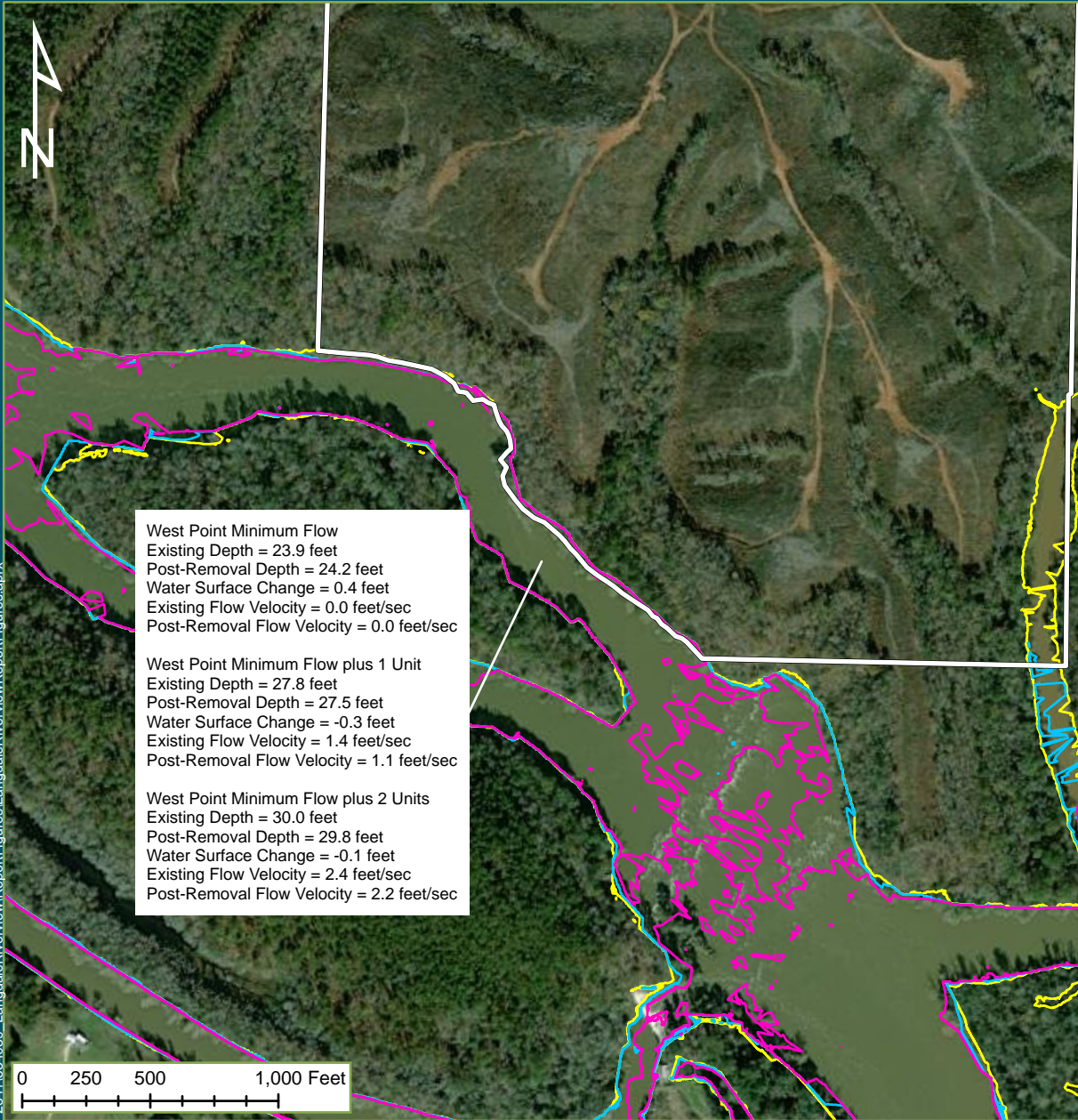
Drawn By: ADY	Date Drawn: 05-20-2022	Checked By: KPN	Date Checked: 05-20-2022
------------------	---------------------------	--------------------	-----------------------------

Kleinschmidt
 141 Main St., PO Box 650
 Pittsfield, Maine 04967
 Telephone: (207) 487-3328
 Fax: (207) 487-3124
www.KleinschmidtGroup.com

This map/data was created for informational, planning, reference and guidance purposes only. Kleinschmidt makes no warranty, expressed or implied related to the accuracy or content of these materials.

Path: Q:\Client_Data\TERRC_P\Projects\P2341634039_LangdaleRiverView\ReportFigures.aprx

Date Printed: 5/20/2022



- Legend**
- Property Boundary
 - Base Flow Inundation Boundary
 - Base Flow +1 Inundation Boundary
 - Base Flow +2 Inundation Boundary

Georgia Power
Langdale, Georgia

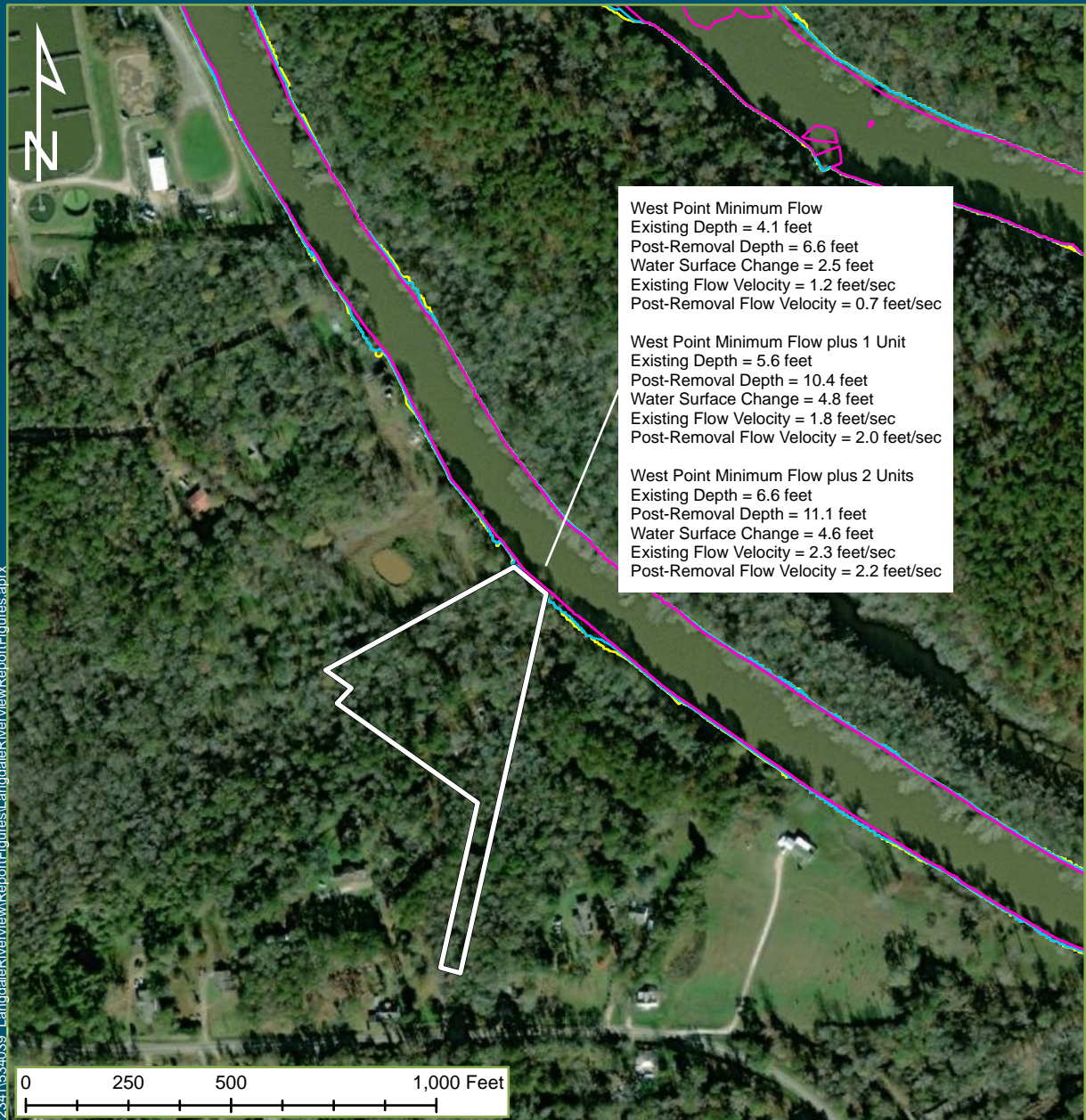
Drawn By: ADY	Date Drawn: 05-20-2022	Checked By: KPN	Date Checked: 05-20-2022
------------------	---------------------------	--------------------	-----------------------------

Kleinschmidt
 141 Main St., PO Box 650
 Pittsfield, Maine 04967
 Telephone: (207) 487-3328
 Fax: (207) 487-3124
 www.KleinschmidtGroup.com

This map/data was created for informational, planning, reference and guidance purposes only. Kleinschmidt makes no warranty, expressed or implied related to the accuracy or content of these materials.

Path: Q:\Client_Data\TERRC_P\Projects\P2341\534039_LangdaleRiverViewReportFigures.aprx

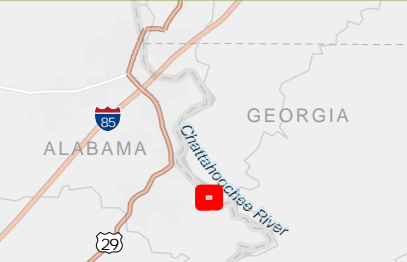
Date Printed: 5/20/2022



West Point Minimum Flow
 Existing Depth = 4.1 feet
 Post-Removal Depth = 6.6 feet
 Water Surface Change = 2.5 feet
 Existing Flow Velocity = 1.2 feet/sec
 Post-Removal Flow Velocity = 0.7 feet/sec

West Point Minimum Flow plus 1 Unit
 Existing Depth = 5.6 feet
 Post-Removal Depth = 10.4 feet
 Water Surface Change = 4.8 feet
 Existing Flow Velocity = 1.8 feet/sec
 Post-Removal Flow Velocity = 2.0 feet/sec

West Point Minimum Flow plus 2 Units
 Existing Depth = 6.6 feet
 Post-Removal Depth = 11.1 feet
 Water Surface Change = 4.6 feet
 Existing Flow Velocity = 2.3 feet/sec
 Post-Removal Flow Velocity = 2.2 feet/sec



- Legend**
- Property Boundary
 - Base Flow Inundation Boundary
 - Base Flow +1 Inundation Boundary
 - Base Flow +2 Inundation Boundary

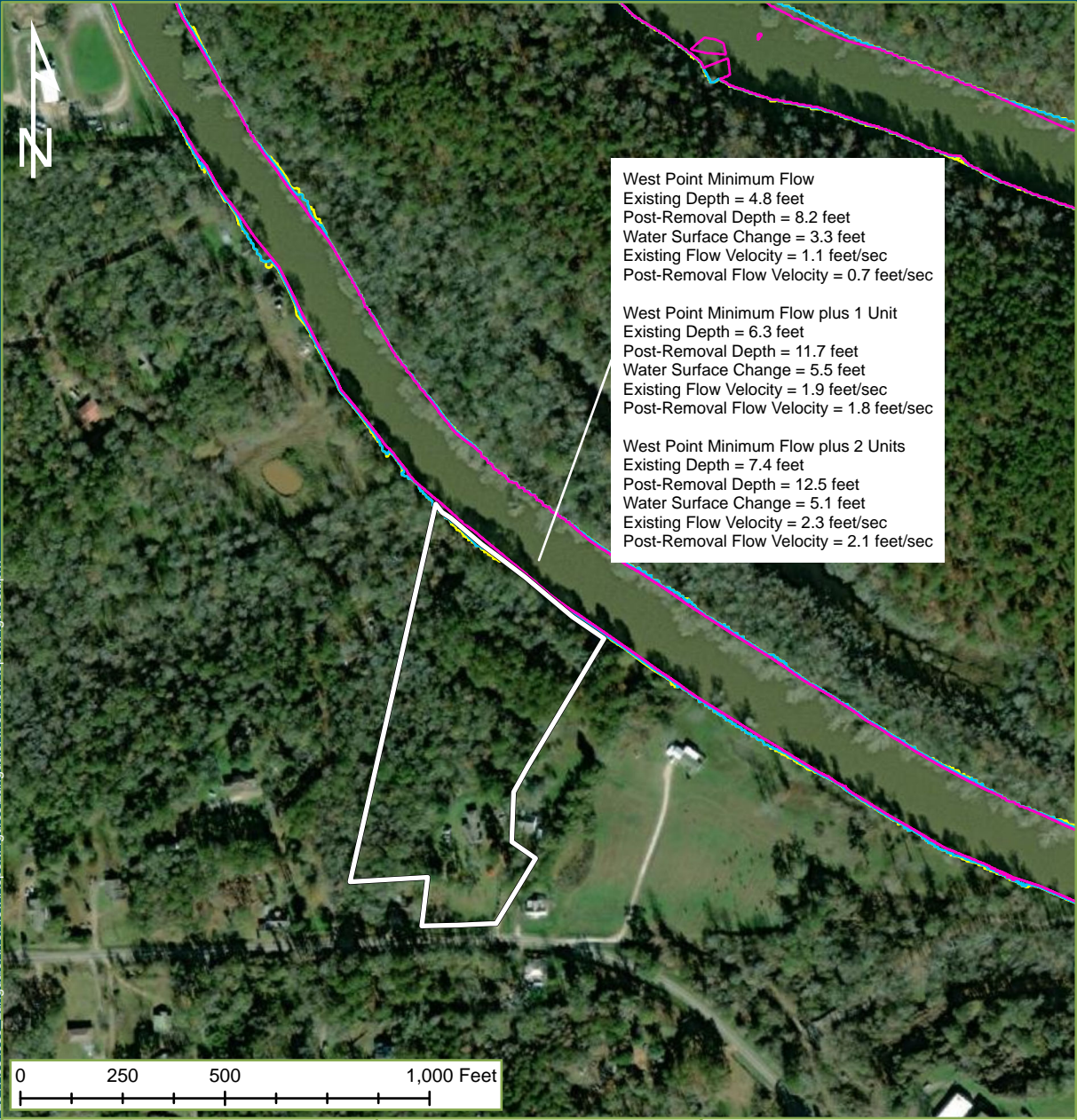
Georgia Power
 Langdale, Georgia

Drawn By: ADY	Date Drawn: 05-20-2022	Checked By: KPN	Date Checked: 05-20-2022
------------------	---------------------------	--------------------	-----------------------------

Kleinschmidt
 141 Main St., PO Box 650
 Pittsfield, Maine 04967
 Telephone: (207) 487-3328
 Fax: (207) 487-3124
www.KleinschmidtGroup.com

This map/data was created for informational, planning, reference and guidance purposes only. Kleinschmidt makes no warranty, expressed or implied related to the accuracy or content of these materials.

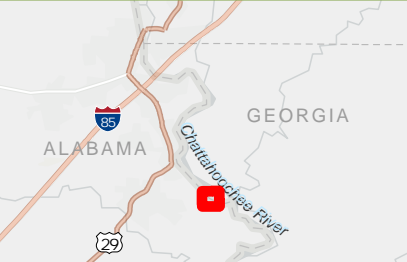
Path: Q:\Client_Data\TERRC_P\Projects\P2341634039_LangdaleRiverView\ReportFigures\LangdaleRiverViewReportFigures.aprx



West Point Minimum Flow
 Existing Depth = 4.8 feet
 Post-Removal Depth = 8.2 feet
 Water Surface Change = 3.3 feet
 Existing Flow Velocity = 1.1 feet/sec
 Post-Removal Flow Velocity = 0.7 feet/sec

West Point Minimum Flow plus 1 Unit
 Existing Depth = 6.3 feet
 Post-Removal Depth = 11.7 feet
 Water Surface Change = 5.5 feet
 Existing Flow Velocity = 1.9 feet/sec
 Post-Removal Flow Velocity = 1.8 feet/sec

West Point Minimum Flow plus 2 Units
 Existing Depth = 7.4 feet
 Post-Removal Depth = 12.5 feet
 Water Surface Change = 5.1 feet
 Existing Flow Velocity = 2.3 feet/sec
 Post-Removal Flow Velocity = 2.1 feet/sec



- Legend**
- Property Boundary
 - Base Flow Inundation Boundary
 - Base Flow +1 Inundation Boundary
 - Base Flow +2 Inundation Boundary

Georgia Power
 Langdale, Georgia

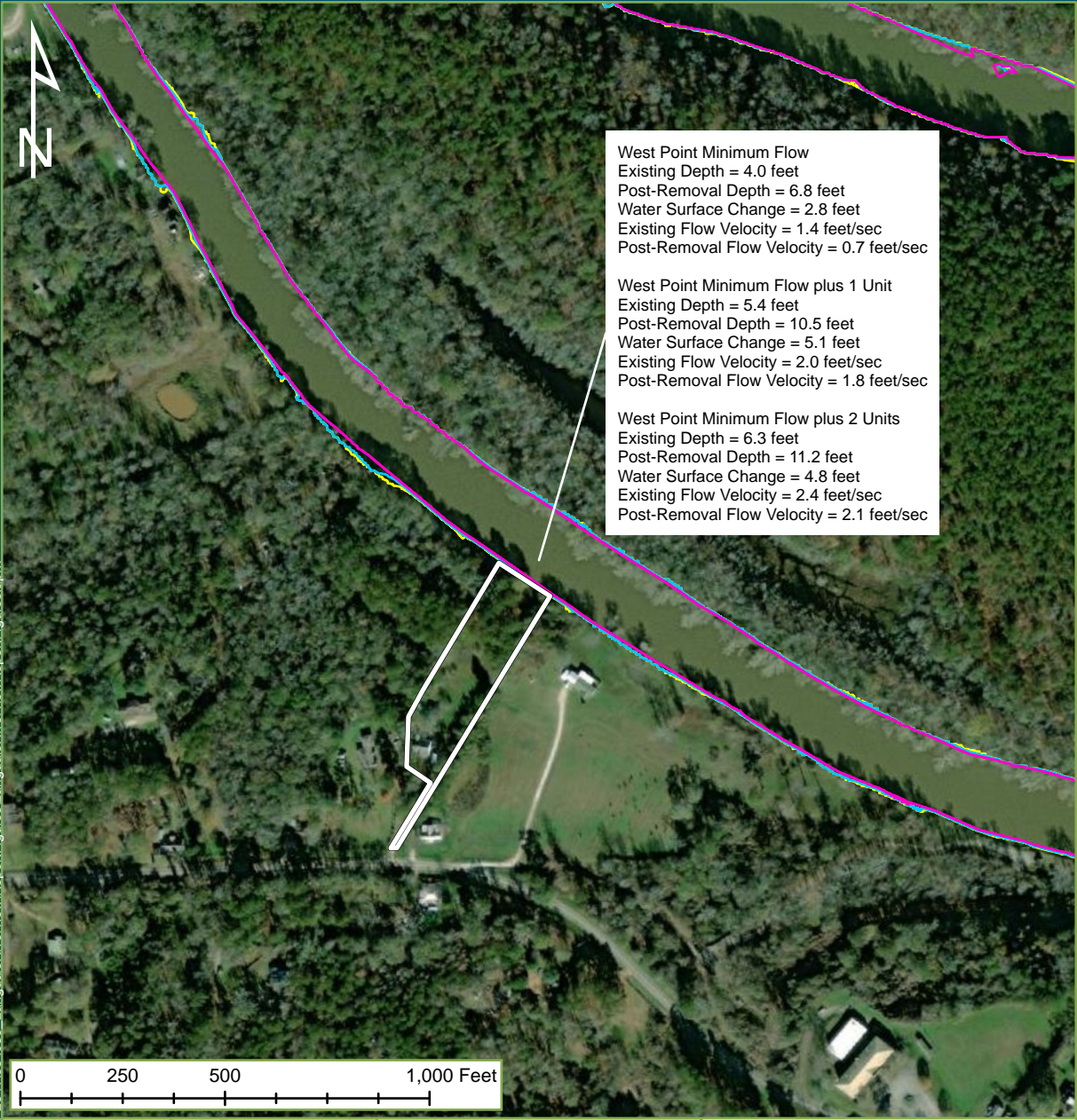
Drawn By: ADY	Date Drawn: 05-20-2022	Checked By: KPN	Date Checked: 05-20-2022
------------------	---------------------------	--------------------	-----------------------------

Kleinschmidt
 141 Main St., PO Box 650
 Pittsfield, Maine 04967
 Telephone: (207) 487-3328
 Fax: (207) 487-3124
 www.KleinschmidtGroup.com

This map/data was created for informational, planning, reference and guidance purposes only. Kleinschmidt makes no warranty, expressed or implied related to the accuracy or content of these materials.

Path: Q:\Client_Data\TERRC_P\Projects\P2341634039_LangdaleRiverView\ReportFigures\LangdaleRiverViewReportFigures.aprx

Date Printed: 5/20/2022

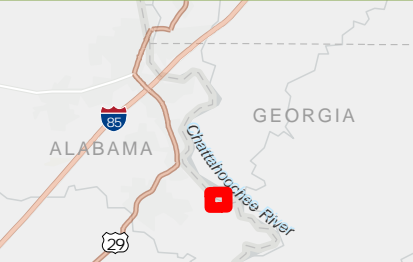


West Point Minimum Flow
 Existing Depth = 4.0 feet
 Post-Removal Depth = 6.8 feet
 Water Surface Change = 2.8 feet
 Existing Flow Velocity = 1.4 feet/sec
 Post-Removal Flow Velocity = 0.7 feet/sec

West Point Minimum Flow plus 1 Unit
 Existing Depth = 5.4 feet
 Post-Removal Depth = 10.5 feet
 Water Surface Change = 5.1 feet
 Existing Flow Velocity = 2.0 feet/sec
 Post-Removal Flow Velocity = 1.8 feet/sec

West Point Minimum Flow plus 2 Units
 Existing Depth = 6.3 feet
 Post-Removal Depth = 11.2 feet
 Water Surface Change = 4.8 feet
 Existing Flow Velocity = 2.4 feet/sec
 Post-Removal Flow Velocity = 2.1 feet/sec

Path: Q:\Client_Data\TERRC_P\Projects\P2341534039_LangdaleRiverView\ReportFigures\LangdaleRiverViewReportFigures.aprx



Legend

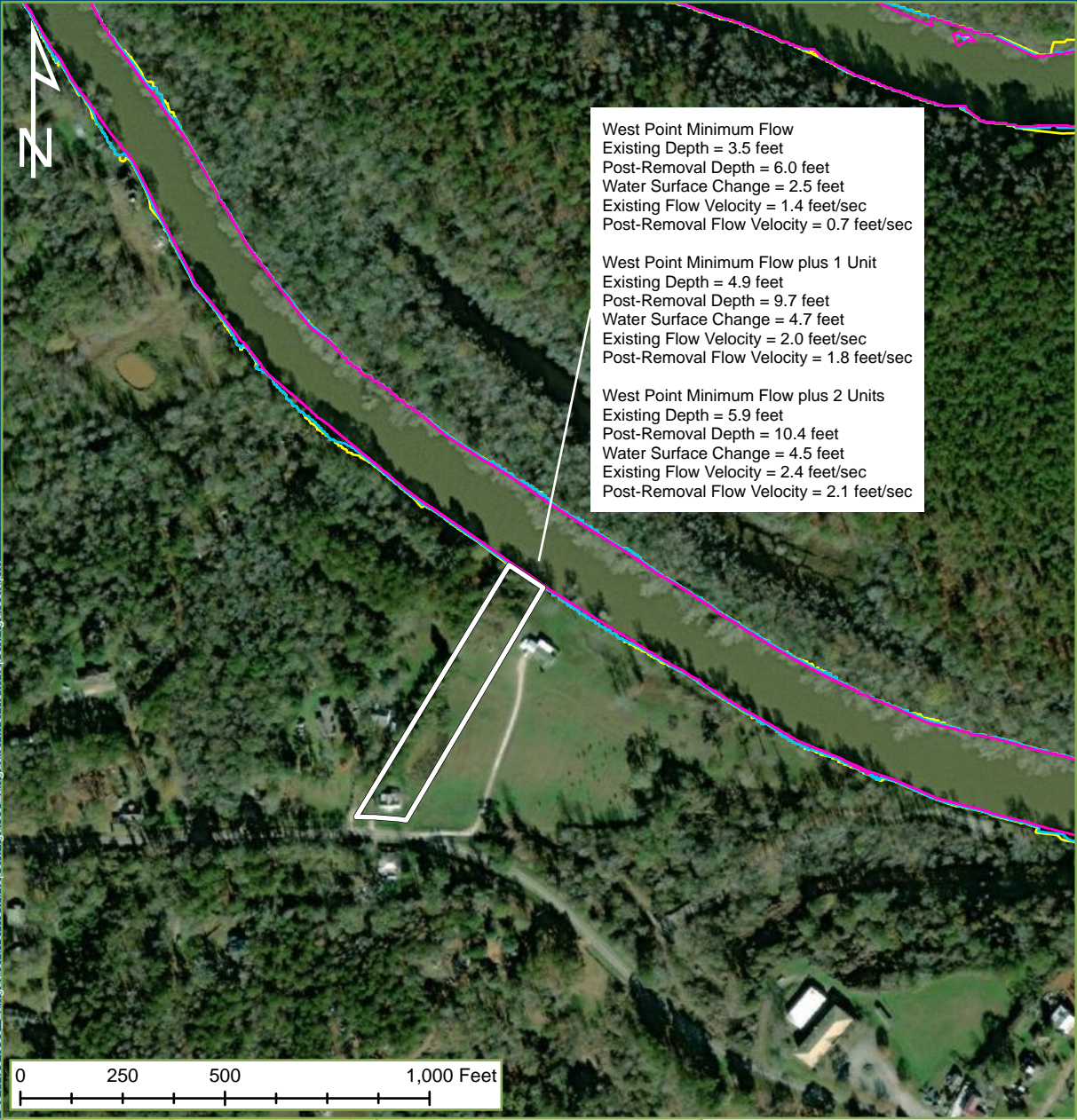
- Property Boundary
- Base Flow Inundation Boundary
- Base Flow +1 Inundation Boundary
- Base Flow +2 Inundation Boundary

Georgia Power
 Langdale, Georgia

Drawn By: ADY	Date Drawn: 05-20-2022	Checked By: KPN	Date Checked: 05-20-2022
------------------	---------------------------	--------------------	-----------------------------

Kleinschmidt
 141 Main St., PO Box 650
 Pittsfield, Maine 04967
 Telephone: (207) 487-3328
 Fax: (207) 487-3124
www.KleinschmidtGroup.com

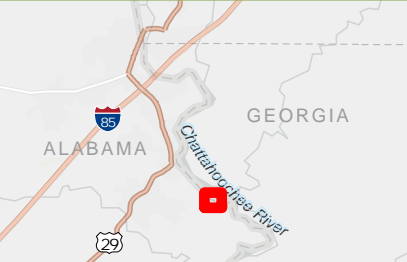
This map/data was created for informational, planning, reference and guidance purposes only. Kleinschmidt makes no warranty, expressed or implied related to the accuracy or content of these materials.



West Point Minimum Flow
 Existing Depth = 3.5 feet
 Post-Removal Depth = 6.0 feet
 Water Surface Change = 2.5 feet
 Existing Flow Velocity = 1.4 feet/sec
 Post-Removal Flow Velocity = 0.7 feet/sec

West Point Minimum Flow plus 1 Unit
 Existing Depth = 4.9 feet
 Post-Removal Depth = 9.7 feet
 Water Surface Change = 4.7 feet
 Existing Flow Velocity = 2.0 feet/sec
 Post-Removal Flow Velocity = 1.8 feet/sec

West Point Minimum Flow plus 2 Units
 Existing Depth = 5.9 feet
 Post-Removal Depth = 10.4 feet
 Water Surface Change = 4.5 feet
 Existing Flow Velocity = 2.4 feet/sec
 Post-Removal Flow Velocity = 2.1 feet/sec



- Legend**
- Property Boundary
 - Base Flow Inundation Boundary
 - Base Flow +1 Inundation Boundary
 - Base Flow +2 Inundation Boundary

Georgia Power
 Langdale, Georgia

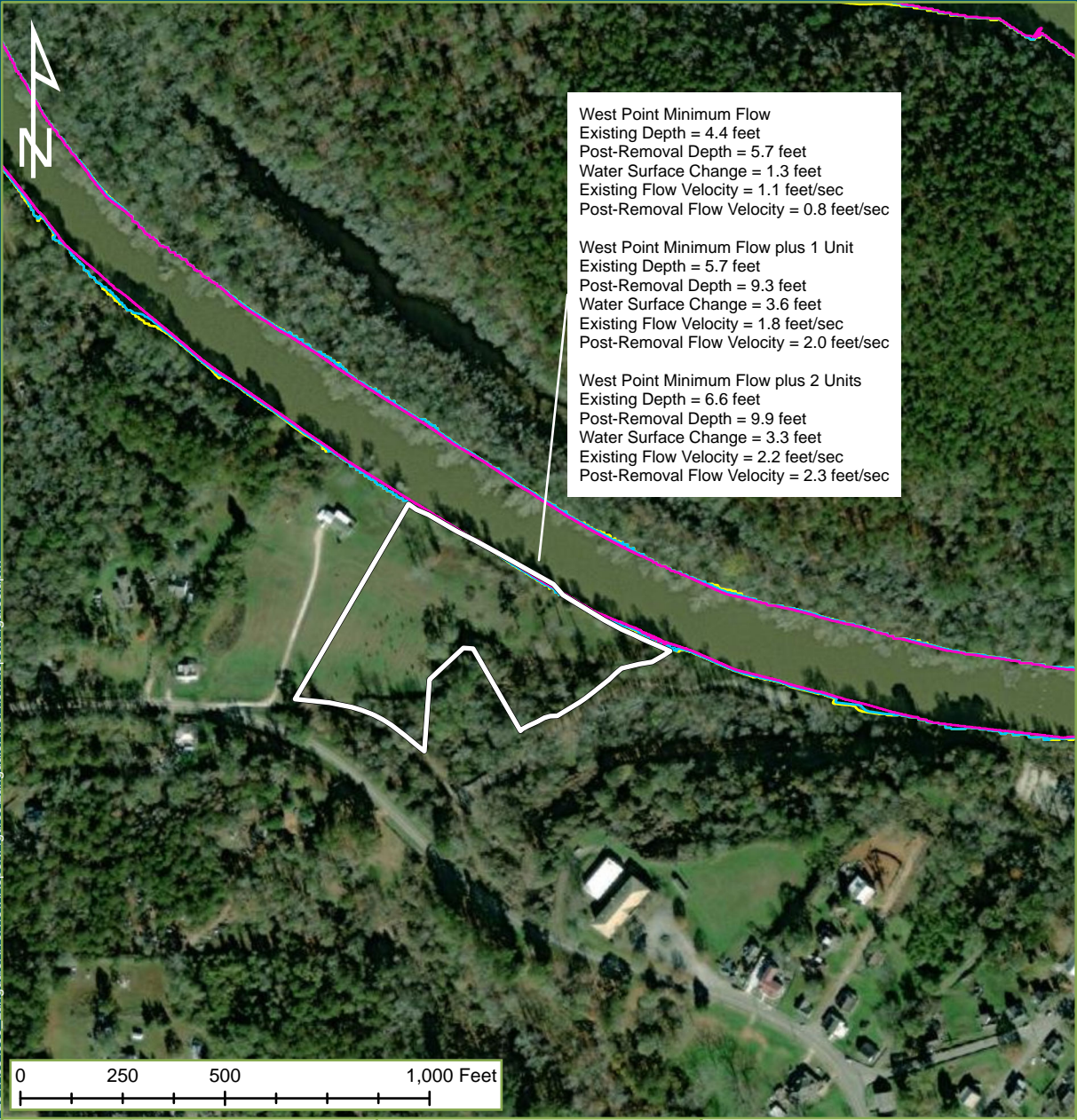
Drawn By: ADY	Date Drawn: 05-20-2022	Checked By: KPN	Date Checked: 05-20-2022
------------------	---------------------------	--------------------	-----------------------------

Kleinschmidt
 141 Main St., PO Box 650
 Pittsfield, Maine 04967
 Telephone: (207) 487-3328
 Fax: (207) 487-3124
www.KleinschmidtGroup.com

This map/data was created for informational, planning, reference and guidance purposes only. Kleinschmidt makes no warranty, expressed or implied related to the accuracy or content of these materials.

Path: Q:\Client_Data\TERC_Projects\P2341634039_LangdaleRiverView\ReportFigures\LangdaleRiverViewReportFigures.aprx

Date Printed: 5/20/2022

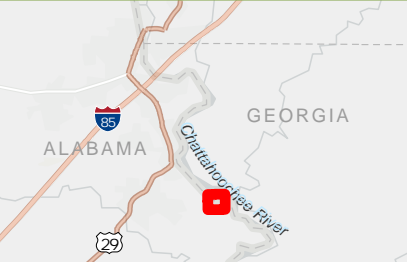
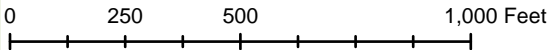


West Point Minimum Flow
 Existing Depth = 4.4 feet
 Post-Removal Depth = 5.7 feet
 Water Surface Change = 1.3 feet
 Existing Flow Velocity = 1.1 feet/sec
 Post-Removal Flow Velocity = 0.8 feet/sec

West Point Minimum Flow plus 1 Unit
 Existing Depth = 5.7 feet
 Post-Removal Depth = 9.3 feet
 Water Surface Change = 3.6 feet
 Existing Flow Velocity = 1.8 feet/sec
 Post-Removal Flow Velocity = 2.0 feet/sec

West Point Minimum Flow plus 2 Units
 Existing Depth = 6.6 feet
 Post-Removal Depth = 9.9 feet
 Water Surface Change = 3.3 feet
 Existing Flow Velocity = 2.2 feet/sec
 Post-Removal Flow Velocity = 2.3 feet/sec

Path: Q:\Client_Data\TERRC_P\Projects\P2341634039_LangdaleRiverView\ReportFigures\LangdaleRiverViewReportFigures.aprx



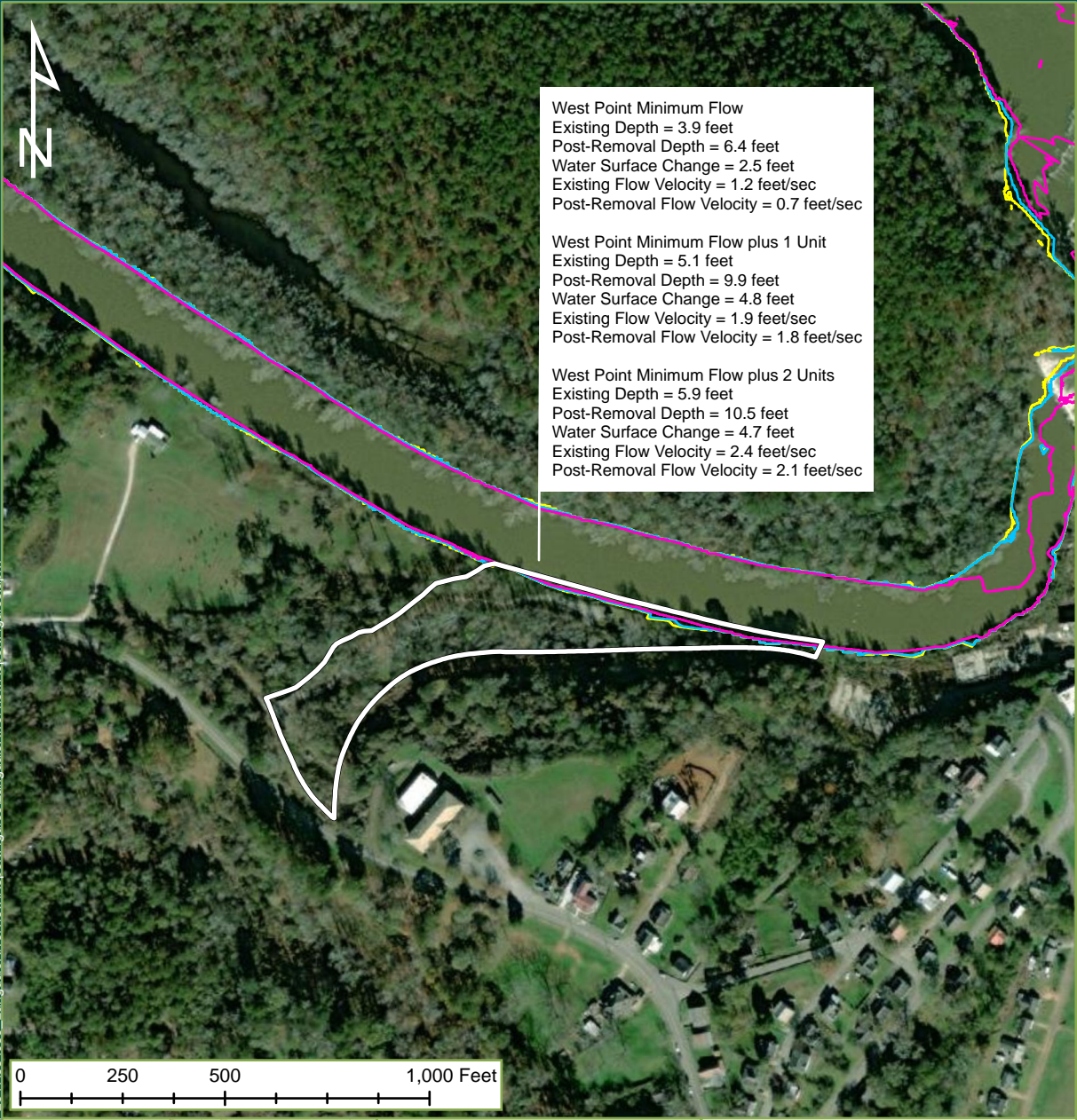
- Legend**
- Property Boundary
 - Base Flow Inundation Boundary
 - Base Flow +1 Inundation Boundary
 - Base Flow +2 Inundation Boundary

Georgia Power
 Langdale, Georgia

Drawn By: ADY	Date Drawn: 05-20-2022	Checked By: KPN	Date Checked: 05-20-2022
------------------	---------------------------	--------------------	-----------------------------

Kleinschmidt
 141 Main St., PO Box 650
 Pittsfield, Maine 04967
 Telephone: (207) 487-3328
 Fax: (207) 487-3124
www.KleinschmidtGroup.com

This map/data was created for informational, planning, reference and guidance purposes only. Kleinschmidt makes no warranty, expressed or implied related to the accuracy or content of these materials.

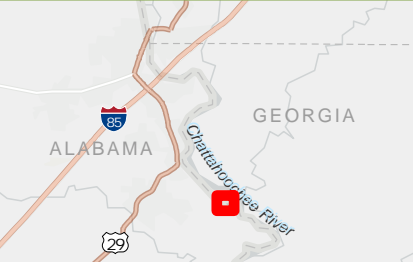


West Point Minimum Flow
 Existing Depth = 3.9 feet
 Post-Removal Depth = 6.4 feet
 Water Surface Change = 2.5 feet
 Existing Flow Velocity = 1.2 feet/sec
 Post-Removal Flow Velocity = 0.7 feet/sec

West Point Minimum Flow plus 1 Unit
 Existing Depth = 5.1 feet
 Post-Removal Depth = 9.9 feet
 Water Surface Change = 4.8 feet
 Existing Flow Velocity = 1.9 feet/sec
 Post-Removal Flow Velocity = 1.8 feet/sec

West Point Minimum Flow plus 2 Units
 Existing Depth = 5.9 feet
 Post-Removal Depth = 10.5 feet
 Water Surface Change = 4.7 feet
 Existing Flow Velocity = 2.4 feet/sec
 Post-Removal Flow Velocity = 2.1 feet/sec

Path: Q:\Client_Data\TERRC_P\Projects\P2341634039_LangdaleRiverView\ReportFigures.aprx



Legend

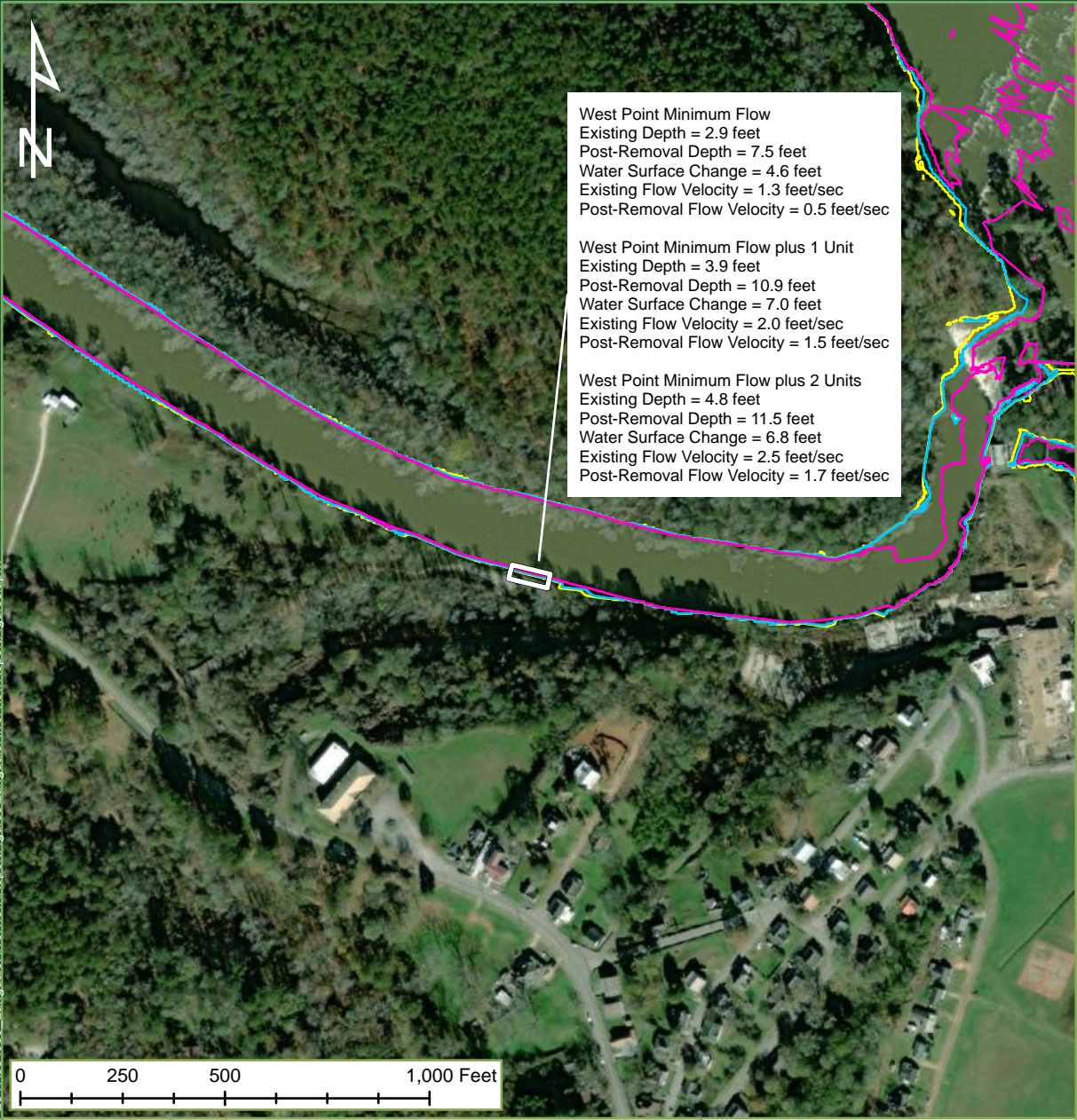
- Property Boundary
- Base Flow Inundation Boundary
- Base Flow +1 Inundation Boundary
- Base Flow +2 Inundation Boundary

Georgia Power
 Langdale, Georgia

Drawn By: ADY	Date Drawn: 05-20-2022	Checked By: KPN	Date Checked: 05-20-2022
------------------	---------------------------	--------------------	-----------------------------

Kleinschmidt
 141 Main St., PO Box 650
 Pittsfield, Maine 04967
 Telephone: (207) 487-3328
 Fax: (207) 487-3124
www.KleinschmidtGroup.com

This map/data was created for informational, planning, reference and guidance purposes only. Kleinschmidt makes no warranty, expressed or implied related to the accuracy or content of these materials.

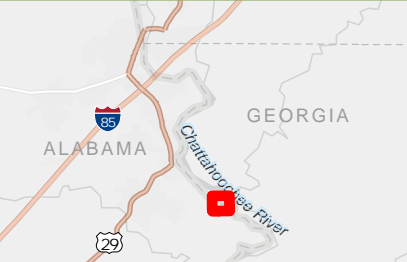


West Point Minimum Flow
 Existing Depth = 2.9 feet
 Post-Removal Depth = 7.5 feet
 Water Surface Change = 4.6 feet
 Existing Flow Velocity = 1.3 feet/sec
 Post-Removal Flow Velocity = 0.5 feet/sec

West Point Minimum Flow plus 1 Unit
 Existing Depth = 3.9 feet
 Post-Removal Depth = 10.9 feet
 Water Surface Change = 7.0 feet
 Existing Flow Velocity = 2.0 feet/sec
 Post-Removal Flow Velocity = 1.5 feet/sec

West Point Minimum Flow plus 2 Units
 Existing Depth = 4.8 feet
 Post-Removal Depth = 11.5 feet
 Water Surface Change = 6.8 feet
 Existing Flow Velocity = 2.5 feet/sec
 Post-Removal Flow Velocity = 1.7 feet/sec

Path: Q:\Client_Data\TERRC_P\Projects\P2341634039_LangdaleRiverView\ReportFigures.aprx



- Legend**
- Property Boundary
 - Base Flow Inundation Boundary
 - Base Flow +1 Inundation Boundary
 - Base Flow +2 Inundation Boundary

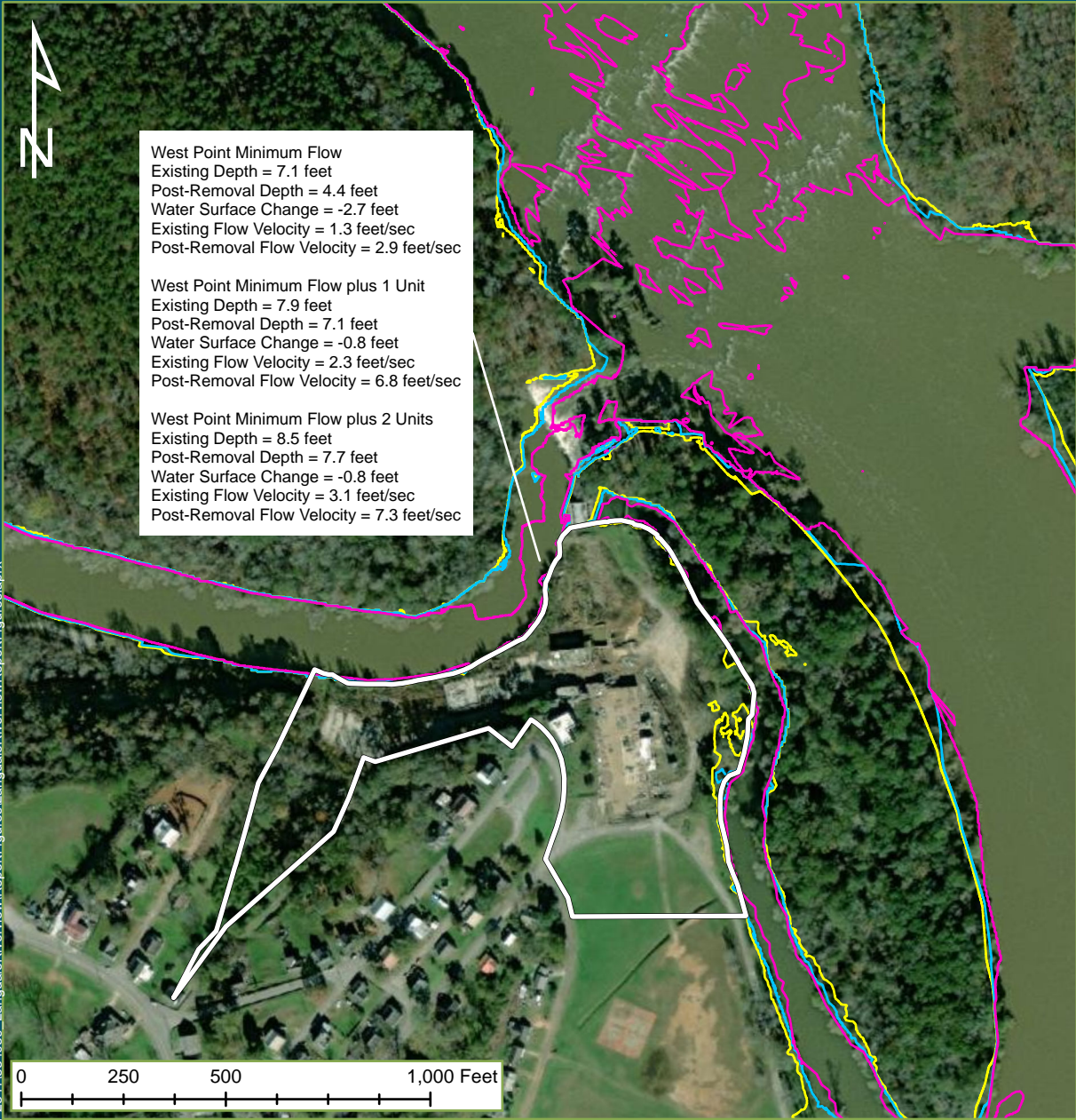
Georgia Power
 Langdale, Georgia

Drawn By: ADY	Date Drawn: 05-20-2022	Checked By: KPN	Date Checked: 05-20-2022
------------------	---------------------------	--------------------	-----------------------------

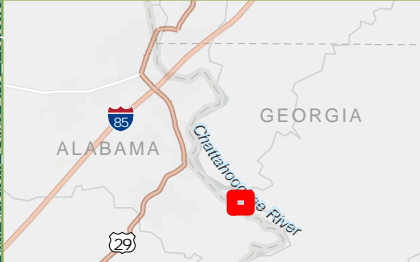
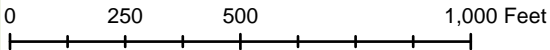
Kleinschmidt
 141 Main St., PO Box 650
 Pittsfield, Maine 04967
 Telephone: (207) 487-3328
 Fax: (207) 487-3124
 www.KleinschmidtGroup.com

This map/data was created for informational, planning, reference and guidance purposes only. Kleinschmidt makes no warranty, expressed or implied related to the accuracy or content of these materials.

Date Printed: 5/20/2022



<p>West Point Minimum Flow Existing Depth = 7.1 feet Post-Removal Depth = 4.4 feet Water Surface Change = -2.7 feet Existing Flow Velocity = 1.3 feet/sec Post-Removal Flow Velocity = 2.9 feet/sec</p>
<p>West Point Minimum Flow plus 1 Unit Existing Depth = 7.9 feet Post-Removal Depth = 7.1 feet Water Surface Change = -0.8 feet Existing Flow Velocity = 2.3 feet/sec Post-Removal Flow Velocity = 6.8 feet/sec</p>
<p>West Point Minimum Flow plus 2 Units Existing Depth = 8.5 feet Post-Removal Depth = 7.7 feet Water Surface Change = -0.8 feet Existing Flow Velocity = 3.1 feet/sec Post-Removal Flow Velocity = 7.3 feet/sec</p>



Legend

- Property Boundary
- Base Flow Inundation Boundary
- Base Flow +1 Inundation Boundary
- Base Flow +2 Inundation Boundary

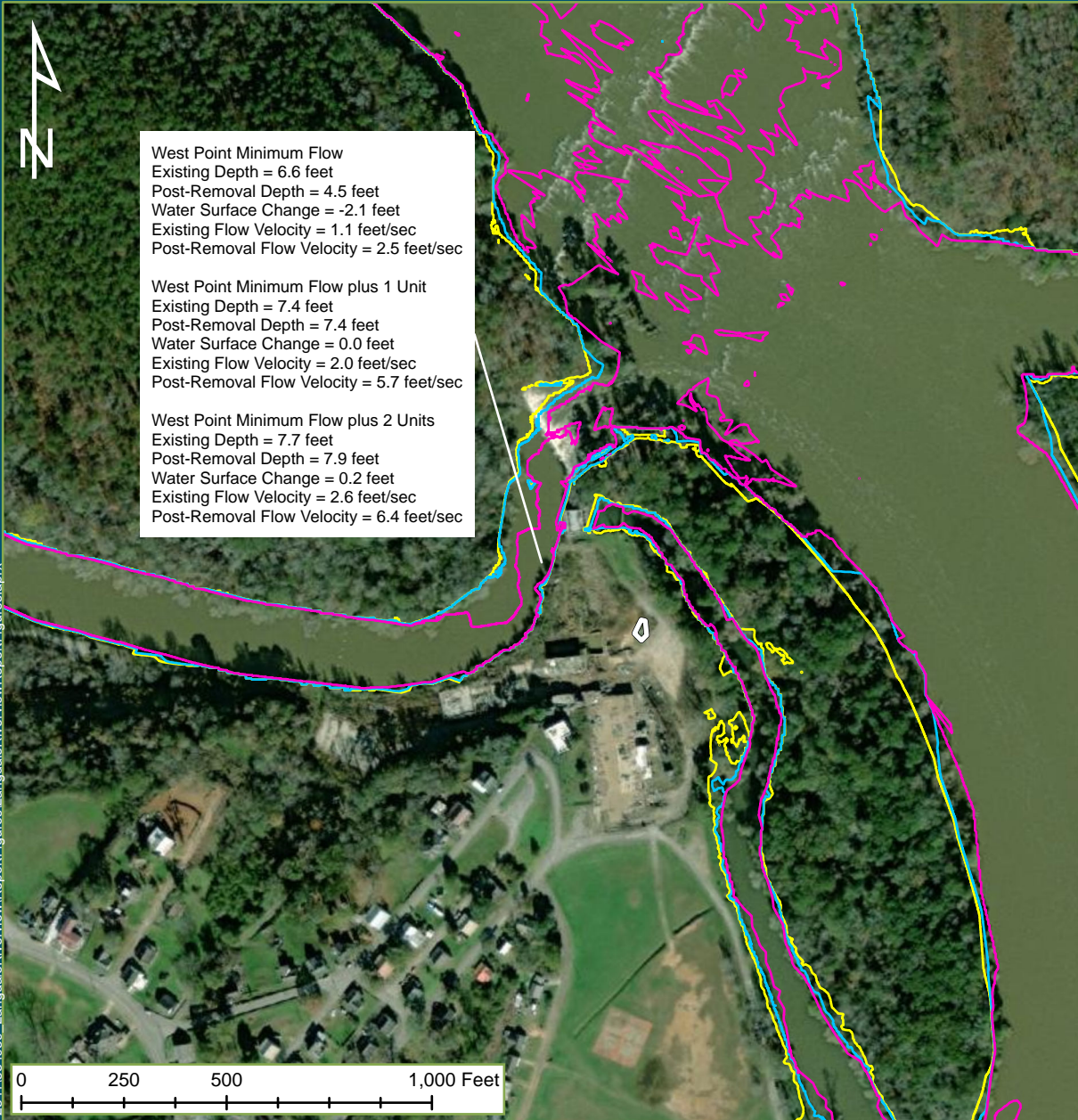
Georgia Power			
Langdale, Georgia			
Drawn By: ADY	Date Drawn: 05-20-2022	Checked By: KPN	Date Checked: 05-20-2022

Kleinschmidt
 141 Main St., PO Box 650
 Pittsfield, Maine 04967
 Telephone: (207) 487-3328
 Fax: (207) 487-3124
www.KleinschmidtGroup.com

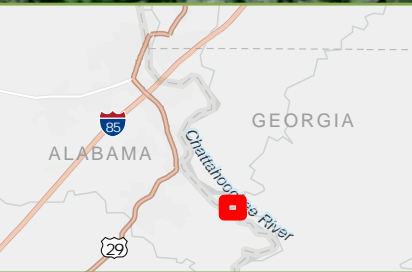
This map/data was created for informational, planning, reference and guidance purposes only. Kleinschmidt makes no warranty, expressed or implied related to the accuracy or content of these materials.

Path: Q:\Client_Data\TERRC_P\Projects\P2341634039_LangdaleRiverView\ReportFigures\LangdaleRiverViewReportFigures.aprx

Date Printed: 5/20/2022



Path: Q:\Client_Data\TERRC_P\Projects\P2341534039_LangdaleRiverView\ReportFigures\LangdaleRiverViewReportFigures.aprx



- Legend**
- Property Boundary
 - Base Flow Inundation Boundary
 - Base Flow +1 Inundation Boundary
 - Base Flow +2 Inundation Boundary

Georgia Power
 Langdale, Georgia

Drawn By: ADY	Date Drawn: 05-20-2022	Checked By: KPN	Date Checked: 05-20-2022
------------------	---------------------------	--------------------	-----------------------------

Kleinschmidt
 141 Main St., PO Box 650
 Pittsfield, Maine 04967
 Telephone: (207) 487-3328
 Fax: (207) 487-3124
www.KleinschmidtGroup.com

This map/data was created for informational, planning, reference and guidance purposes only. Kleinschmidt makes no warranty, expressed or implied related to the accuracy or content of these materials.

Date Printed: 5/20/2022